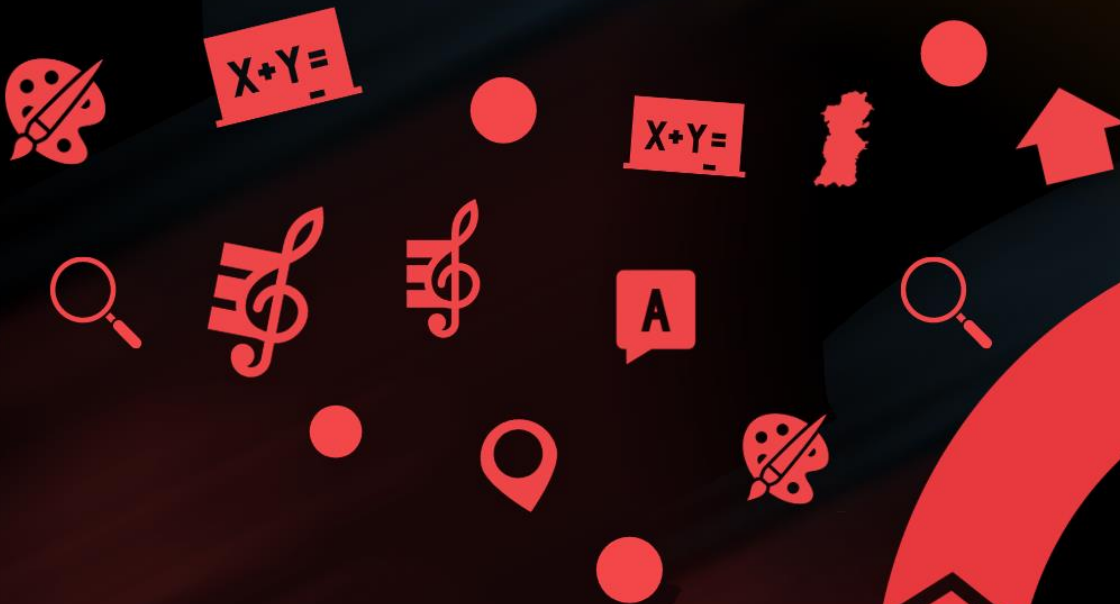




**Establishment of a new all-age school for
pupils aged 4-18 in Llanfair Caereinion**
Consultation Report



Consultation on the establishment of a new all-age school for pupils aged 4-18 in Llanfair Caereinion

Contents

| | |
|--|-----------|
| 1. OVERVIEW OF THE CONSULTATION | 3 |
| i) Consultation methods..... | 3 |
| ii) Responses received..... | 3 |
| iii) Summary of issues raised..... | 4 |
| 2. CONSULTATION RESPONSE FORM | 5 |
| 3. CONSULTATION WITH PUPILS | 9 |
| i) Llanfair Caereinion C.P. School | 9 |
| ii) Caereinion High School..... | 11 |
| 4. CONSULTATION MEETINGS WITH STAFF AND GOVERNORS | 14 |
| i) Consultation meeting with Staff of Llanfair Caereinion C.P. School and Caereinion High School – 4 th November 2020 | 14 |
| ii) Consultation meeting with Governors of Llanfair Caereinion C.P. School and Caereinion High School – 4 th November 2020 | 14 |
| 5. ESTYN | 17 |
| 6. ISSUES RAISED DURING THE CONSULTATION PERIOD | 22 |
| 7. FURTHER ASSESSMENT AND CONCLUSION | 99 |

If you require a copy of the document in a different format, please contact the Transforming Education Team on 01597 826277, or e-mail school.organisation@powys.gov.uk.

Consultation on the establishment of a new all-age school for pupils aged 4-18 in Llanfair Caereinion

1. OVERVIEW OF THE CONSULTATION

Powys County Council consulted on proposals to establish a new all-age school for pupils aged 4-18 in Llanfair Caereinion. The proposals were as follows:

- To close Llanfair Caereinion C.P. School and Caereinion High School
- To establish a new bilingual all-age school for pupils aged 4-18 on the current sites of Llanfair Caereinion C.P. School and Caereinion High School

The consultation took place from the 13th October 2020 to the 24th November 2020.

i) Consultation methods

The consultation documentation was available on the Council's website throughout the consultation period, and was distributed to stakeholders, as required by the School Organisation Code (2018). A separate version for young people and primary aged pupils was also available.

Consultees were invited to respond to the consultation by either completing an online consultation form, filling in a paper copy of the form and returning it to the Transforming Education Team at County Hall, or by e-mailing / writing to the Transforming Education Team.

Meetings were held virtually with the following:

- Staff of Llanfair Caereinion C.P. School and Caereinion High School – 4th November 2020
- Governors of Llanfair Caereinion C.P. School and Caereinion High School – 4th November 2020
- School Councils of Llanfair Caereinion C.P. School and Caereinion High School – 11th and 18th November 2020

ii) Responses received

A total of 111 respondents completed the consultation response form which was included in the consultation document. This included paper copies as well as responses submitted using the online response form.

In addition, 8 written responses were received from respondents, including Estyn.

The response received from Estyn is provided on page 18, in-line with the requirements of the School Organisation Code.

iii) Summary of issues raised

The issues raised in the consultation responses are listed in detail in section 6 on page 22. This includes the Council's response to each issue. However, the following is a summary of the issues raised:

1. Impact on pupils
2. Impact on staff
3. Comments relating to Leadership and Governance
4. Reference to the community
5. Comments relating to buildings
6. Reference to Council strategies
7. Reference to Estyn
8. Financial queries
9. Comments relating to the all-age school model
10. Comments about the current provision
11. Criticism of the proposal / the Council
12. Comments about the Welsh Language
13. Reference to Welsh-medium education delivery models
14. Reference to equality of opportunity / Welsh language being treated less favourably than English
15. Concern about the impact on English-medium pupils / provision
16. Comments relating to the consultation documentation
17. Comments relating to the process
18. Impact on protected characteristic groups
19. Other options

2. CONSULTATION RESPONSE FORM

111 respondents completed the consultation response form which was included in the consultation document. This included paper copies as well as responses submitted using the online response form.

The quantitative findings of the questionnaire are summarised below. Written comments were also provided in the consultation response forms. The issues raised in these comments are included in Section 6 of this report.

Part 1 – About you

- Please indicate how you are associated with the schools affected by this consultation:

| Response | No. | % |
|---------------------------------------|------------|---------------|
| Parent, carer or guardian | 49 | 44.1% |
| Prospective parent, carer or guardian | 7 | 6.3% |
| Governor | 12 | 10.8% |
| Member of staff | 22 | 19.8% |
| Member of the community | 9 | 8.1% |
| Organisation | 6 | 5.4% |
| No association with either school | 3 | 2.7% |
| Other | 3 | 2.7% |
| Total responses | 111 | 100.0% |

- Please specify which school you are associated with:

| Response | No. | % |
|--|------------|---------------|
| Llanfair Caereinion C.P. School | 22 | 19.8% |
| Caereinion High School | 54 | 48.6% |
| A feeder school apart from Llanfair Caereinion C.P. School | 22 | 19.8% |
| No association with any school | 13 | 11.7% |
| Total responses | 111 | 100.0% |

- Please provide your postcode:

| Response | No. | % |
|-------------------------------|-----|-------|
| Llanfair Caereinion/Welshpool | 64 | 57.7% |
| Newtown | 24 | 21.6% |
| Llanfyllin | 9 | 8.1% |
| Llanrhaeadr-ym-Mochnant | 2 | 1.8% |
| Caersws | 2 | 1.8% |
| Llanbryn-mair | 2 | 1.8% |
| Neath | 1 | 0.9% |
| Montgomery | 1 | 0.9% |

| | | |
|------------------------|------------|---------------|
| Machynlleth | 1 | 0.9% |
| Aberystwyth | 1 | 0.9% |
| Not answered | 4 | 3.6% |
| Total responses | 111 | 100.0% |

Part 2 – Consultation Response

3. Do you agree with the current proposal to establish a new all-age school in Llanfair Caereinion?

| Response | No. | % |
|------------------------|------------|---------------|
| Yes | 58 | 52.3% |
| No | 37 | 33.3% |
| Don't know | 16 | 14.4% |
| Total responses | 111 | 100.0% |

4. Do you think that the Council should be considering any other options for Llanfair Caereinion instead of the proposal to establish a new all-age school?

| Response | No. | % |
|------------------------|------------|---------------|
| Yes | 45 | 40.5% |
| No | 49 | 44.1% |
| Don't know | 17 | 15.3% |
| Total responses | 111 | 100.0% |

Part 3 – About you

12. How old are you?

| Response | No. | % |
|------------------------|------------|---------------|
| Under 16 | 0 | 0.0% |
| 16-23 | 1 | 0.9% |
| 25-34 | 17 | 15.3% |
| 35-44 | 21 | 18.9% |
| 45-54 | 36 | 32.4% |
| 55-64 | 12 | 10.8% |
| 65-74 | 7 | 6.3% |
| 75-84 | 0 | 0.0% |
| 85+ | 0 | 0.0% |
| Prefer not to say | 15 | 13.5% |
| Not answered | 2 | 1.8% |
| Total responses | 111 | 100.0% |

13. What is your gender?

| Response | No. | % |
|------------------------|------------|---------------|
| Male | 25 | 22.5% |
| Female | 70 | 63.1% |
| Gender Fluid | 0 | 0.0% |
| Non-Binary | 0 | 0.0% |
| Gender neutral | 1 | 0.9% |
| Prefer not to say | 12 | 10.8% |
| Not answered | 3 | 2.7% |
| Total responses | 111 | 100.0% |

14. Can you understand, speak or write Welsh?

| Response | No. | % |
|------------------------|------------|---------------|
| Yes | 74 | 66.7% |
| No | 22 | 19.8% |
| Prefer not to say | 14 | 12.6% |
| Not answered | 1 | 0.9% |
| Total responses | 111 | 100.0% |

15. If you have school-aged children, are they entitled to receive free school meals?

| Response | No. | % |
|------------------------|------------|---------------|
| Yes | 5 | 4.5% |
| No | 83 | 74.8% |
| Prefer not to say | 15 | 13.5% |
| Not answered | 8 | 7.2% |
| Total responses | 111 | 100.0% |

16. If you have school-aged children, do they have any additional learning needs?

| Response | No. | % |
|------------------------|------------|---------------|
| Yes | 8 | 7.2% |
| No | 79 | 71.2% |
| Prefer not to say | 15 | 13.5% |
| Not answered | 9 | 8.1% |
| Total responses | 111 | 100.0% |

17. Do you consider yourself to be disabled?

| Response | No. | % |
|------------------------|------------|---------------|
| Yes | 2 | 1.8% |
| No | 94 | 84.7% |
| Prefer not to say | 13 | 11.7% |
| Not answered | 2 | 1.8% |
| Total responses | 111 | 100.0% |

18. What is your ethnic group?

| Response | No. | % |
|-----------------------------|------------|---------------|
| White | 95 | 85.6% |
| Asian | 0 | 0.0% |
| Black, African or Caribbean | 0 | 0.0% |
| Mixed | 0 | 0.0% |
| Gypsy/Traveller | 0 | 0.0% |
| Other | 0 | 0.0% |
| Prefer not to say | 14 | 12.6% |
| Not Answered | 2 | 1.8% |
| Total | 111 | 100.0% |

3. CONSULTATION WITH PUPILS

Officers from the local authority met with the School Council of Llanfair Caereinion C.P. School and Caereinion High School to get their views on the proposals.

The notes of these meetings are provided below:

i) Llanfair Caereinion C.P. School

11th November 2020

Present: Huw Foster-Evans, Sarah Astley, and Richard Williams

Officers from Powys County Council met virtually via Microsoft Teams with representatives from the School Council of Llanfair Caereinion C.P. School to discuss the consultation to establish a new all-age school in Llanfair Caereinion.

The session was held with 12 pupils from the school council. The group were all Year 6 students.

The officers explained the proposals for the merging of Llanfair Caereinion C.P. School and Caereinion High School to create a new all-age school for pupils aged 4-18 on the current sites of Llanfair Caereinion C.P. School and Caereinion High School

The pupils were asked several questions and their responses are summarised below:

What do you like about your current school?

- It's welcoming
- It has good grounds and good playgrounds
- Pupils liked the size; it was not too big or not too small
- Pupils like the headteacher
- The teachers are polite and helpful
- Pupils didn't feel too grown up and they don't get too much homework
- Nice food
- Not too many other children, not a massive school where all cramped together
- Pupils liked that the primary school is spread out
- Behaviour is good

What do you not like about school?

- Not allowed to play cat and mouse

- More pupil voice, getting to decide more things
- Pupils thought they act older than they actually are sometimes
- Football yard as it's concrete
- Crowded when they can't use the field – use more grounds

What do you think would be different if proposal went ahead?

- The work might change and there might be more homework
- Playing with older children might be rougher
- Pupils thought they might act older than they are
- How would Year 11 and Year 1 pupils be together
- Would we play on the same yard as Year 11
- When we move to Year 7 it isn't exciting and we are in the same school
- There might be different teachers
- Mixture of age groups

What are you most excited about moving to high school?

- Learn more subjects like French and Science
- More freedom and more responsibilities
- Get more homework
- Having more space
- Harder work as opposed to spellings
- The food available

What would be better for the primary school if you were part of one school?

- Make new friends
- Want to learn more
- Use the high school facilities for French, Science and Technology

Is there anything which concerns you about one school?

- Will things change a great deal
- Will we be separated from our brothers and sisters
- Year 11s could be mean to the younger pupils
- There could be bullies
- Some people would not like it

General Questions

- Would there be a new uniform?
- What uniform would you like – shorts, blazer, own clothes, not shirt and tie, if we did wear shirt and tie it would look smarter

- Would the uniforms be different between primary and secondary?
- Would we be separated from their friends?
- Would the primary school have the same choices as secondary for food/drink?

To conclude the session, the officers explained the next steps in the consultation process. It was explained that the consultation would close on the 24th November, and the pupils were encouraged to send any further comments to the Transforming Education Team using the contact details on the pupil version of the consultation document, or by speaking to their teacher.

ii) **Caereinion High School**

11th November 2020 and 18th November 2020

Present: Huw Foster-Evans, Sarah Astley, Marianne Evans, and Richard Williams

Officers from Powys County Council met virtually via Microsoft Teams with representatives from the School Council of Caereinion High School to discuss the consultation to establish a new all-age school in Llanfair Caereinion.

Two sessions were held, with a total of 10 pupils from the school council. One session consisted of 4 pupils all from either Year 12 or Year 13, and the second session consisted of 6 pupils all from Year 9.

The officers explained the proposals for the merging of Llanfair Caereinion C.P. School and Caereinion High School to create a new all-age school for pupils aged 4-18 on the current sites of Llanfair Caereinion C.P. School and Caereinion High School

The pupils were asked several questions and their responses are summarised below:

What would be the advantages of the proposal?

- It would retain education in the Llanfair Caereinion area.
- It would allow the schools to share resources, which could be seen as an advantage or disadvantage if the resources are stretched too thin.
- Transition for Year 6 pupils is not easy due to differences in the work, amount of homework etc. Transition would be smoother in an all-age school as students would be working with the secondary phase before starting.
- It is a good idea for younger pupils to have the opportunity to use specialist facilities. This would allow younger pupils to have an understanding in subjects such as Science.

- There is already some school to school working, for example, one of the students went to the primary school and did Football Coaching for their Welsh Baccalaureate Community Challenge.
- The proposal will help with education in both the primary and secondary and will help with learning Welsh at a younger age
- Primary school students will transition easier to secondary school as they will be familiar with aspects, including the layout of the secondary school
- The proposal will help students learn languages easier

What would be the disadvantages of the proposal?

- Primary school students may have to learn more secondary school level work at a younger age
- Other feeder primaries might be forgotten and those students should still be able to access transition events.
- The school should remain bilingual and dual stream. There is not enough pupils who speak Welsh to justify the change. The school would lose 50% of staff and pupils who do not speak Welsh.

What balance of choice currently exists between both language streams

- Welsh Stream there isn't the same vocational courses as offered to English Stream
- The Welsh Stream does not offer the same number of vocational courses as is offered to the English Stream
- There is already a lot of focus on Welsh for students in the English Stream
- Having a bilingual school would guarantee more exposure for English Stream students to the Welsh Language

What improvements need to be made to facilities

- The Sixth Form facilities are poor compared to other sixth forms.
- An increase this year in the numbers studying at Sixth Form means that the Sixth Form can no longer fit into the Sixth Form room.
- There should be AstroTurf pitch to replace the redgra pitch.
- Investment in sports facilities would allow for more sports development.
- Investment in facilities would lead to wider community use.

Opportunity for younger children to work with high school children

- Examples were discussed where sixth formers had looked after younger pupils at events, and this could be replicated where sixth formers help primary pupils

- Being in Year 7 could be scary and exciting, but pupils may be apprehensive to meet new people and older children working with them could ease their apprehensions

General comments/questions

- The proposal could lead to primary students being exposed to better technology, computers, labs and workshops
- The proposal could lead to primary students being exposed to different languages such as French
- Lot of young athletes getting into rugby, football and other sports which gives opportunities for younger pupils to integrate into these sports
- More space in the high school for pupils
- Having an event with the primary and high school pupils together will introduce role models from secondary school and inspire primary students
- Would the 4-18 all-age school have one headteacher?
- Are there opportunities for children aged 0-4 to also be included in the future?

To conclude the session, the officers explained the next steps in the consultation process. It was explained that the consultation would close on the 24th November, and the pupils were encouraged to send any further comments to the Transforming Education Team using the contact details on the pupil version of the consultation document.

4. CONSULTATION MEETINGS WITH STAFF AND GOVERNORS

Consultation meetings were held with the staff and governors of both schools. The issues raised at these meetings are summarised below:

i) Consultation meeting with Staff of Llanfair Caereinion C.P. School and Caereinion High School – 4th November 2020

- If the school closes in 2022, what would happen to the staff's contracts?
- How does this proposal fit in with the Council's plans to have a Welsh-medium secondary school in the county?
- What would be the capacity of the all-through school, in terms of number of staff? Would there be a similar capacity in terms of staff members, or would it be different?
- Is there Transformation funding available for the merging of the two schools, to safeguard jobs?
- We have heard that our contracts would be continuous, but what if our role isn't there anymore? What will happen then with contracts?
- Will staff have to re-apply for their jobs, within the new staffing structure?
- If you were a maths teacher for example, would it be that you teach in the Primary school or the High school, or both?
- What would happen to the contracts of colleagues who were perhaps on maternity or sickness leave, in the transition between the current schools and the new all-through school?
- What evidence is there that this model works?
- Is one of the aims for Powys to improve the opportunities and provision for post 14 and 16? As we aren't speaking about much change for these age categories here.
- Why aren't other schools in the cluster included in this transformation model?
- Thinking of budgets, are some all-through schools in deficit budgets from this transformation, and if so, how does this impact on the future of the education in these schools?
- With the development of the Welsh language if it was an avenue to go down, what support would the council give to the parents and community for people moving to the area etc?

ii) Consultation meeting with Governors of Llanfair Caereinion C.P. School and Caereinion High School – 4th November 2020

- How are you ensuring that the community as a whole isn't disadvantaged in being engaged in these consultation? The schools have sent the information out to parents but is there normally a consultation meeting which they would attend?

- There could be a danger here that we are conflating two issues, it needs to be clear to the community that this is a consultation on the establishment of the all-age school not the linguistic provision.
- You say that you will take forward the discussions regarding the language in parallel with this work and I would just like to understand the mechanism in how this is going to be carried out?
- I would appreciate hearing from you about the pros and cons of different all through schools' models. For example, I am aware we have a federation in Llanidloes and an all-through school in Llanfyllin. It would be good to hear what makes an all through school attractive, and even more attractive than a federation.
- The all-through school is still quite a new model and the shared learning and practice is really important to engage on so the young people, teacher and governors are paving the way what the school will bring to the curriculum. As it is now the question is, is it going to be better than what we currently have for our learners and staff?
- An open and honest approach is the best approach with staffing process as that is where the anxiety seems to be, down to redundancy and if they are going to have a job.
- We need to learn from Bro Hyddgen regarding the new all Welsh all through school there – that could be the future for Llanfair Caereinion, even though it isn't in this consultation, you need to be honest and open that it could be a possibility.
- We have heard that the data suggests that it improves the transition from primary schools from Llanfair Caereinion, but what about the 2/3rds that don't come from the primary?
- I am just concerned that it about 2/3rds of our students which aren't coming from the primary school and how we have to adapt and what are the benefits for them.
- Could we have a bit more detail on how the interim governing body is established?
- Pleased to hear it is not driven by cost and efficiency savings.
- In terms of the community, in terms of the high school the community is much larger and includes Newtown – pupils from Newtown represent quite a large percentage of the high school. They need to be involved in this consultation and need to be engaged in the process as well. There is a transport issue with people in the wider community who don't naturally fall into the catchment area we serve and this needs to be looked at as soon as possible. We have pupils who are missing out and I am concerned that we are failing those pupils now.
- Ysgol Caereinion are losing pupils due to transport. It is an issue that has not been resolved.
- There is a great deal of experience out there relating to the all through school model, we can learn from so many examples and working with colleagues to make it a smoother transition.

- The catchment definition is crucial to this as well and it needs to be resolved.
- In Ysgol Rhiw Bechan, the Welsh stream has grown successfully, the parents are very loyal to Caereinion high school, I think they want the reassurance they are going to be part of this process.
- It's crucial that we have got confirmation that we are not going to lose secondary education in this area, and it is exciting to be part of this project. I think as feeder schools if we can be part of the process then it is quite positive.
- I just think that in this discussion we need to know about it being something better but can we hear more about the new curriculum and the way an all through school can meet those needs in a way a standalone school wouldn't?
- In terms of the financial position in the first year will the schools start with a clean slate whether there is a surplus or deficit?
- Regarding budgets, I understand that there will be no additional funds to ease the transition, only the budget given from the formula?
- Am I right in saying that there will be no difference in the budget at this moment in time, that they will have both those budgets?
- I am pleased to hear about the confirmation of money and planning effectively means you deliver effectively. I am pleased to hear that the resource is available. It is useful and an exciting proposal and to have ambition in providing top education in the area.
- We have had a lot of language discussion this evening and I want all members to be aware about the sensitive discussion. Within our school there is still a large amount of students learning in the school in English and it is crucial to bring them through on our journey – I don't want it to divide the community of Llanfair Caereinion.
- Quick question about the budget, does the buildings and maintenance get surveyed before, and the buildings are quite old and some work might need to be done, is that in mind? From a health and safety aspect, there is a need to ensure the building is fit for purpose
- Are you going to be holding another meeting once all consultation responses have been analysed and issued to cabinet?

5. ESTYN

Estyn's response to the consultation is provided below:

This report has been prepared by Her Majesty's Inspectors of Education and Training in Wales.

Under the terms of the School Standards and Organisation (Wales) Act 2013 and its associated Code, proposers are required to send consultation documents to Estyn. However, Estyn is not a body which is required to act in accordance with the Code and the Act places no statutory requirements on Estyn in respect of school organisation matters. Therefore, as a body being consulted, Estyn will provide their opinion only on the overall merits of school organisation proposals.

Estyn has considered the educational aspects of the proposal and has produced the following response to the information provided by the proposer.

Introduction

This proposal is submitted by Powys County Council to close Llanfair Caereinion Community Primary School and Caereinion High School, and establish a new bilingual all-age school for pupils aged 4-18 on the current sites of Llanfair Caereinion C.P. School and Caereinion High School.

Summary/Conclusion

The proposer has provided useful information that explains the reasoning behind this proposal. This proposal is in line with the county's current School Transport Policy and Secondary and Post-16 Delivery Plan. It also responds to the new Strategy for Transforming Education in Powys, which identifies a number of aims and objectives to transform the education system in Powys over the next few years, in order to provide the best opportunities possible for learners in Powys now and in the future. One of the strategy's aims is the 'Develop a network of all-age schools based around the 13 current secondary school locations'.

Since the launch of the new strategy, discussions have been held with representatives of the governing bodies of Llanfair Caereinion C.P School and Caereinion High School to examine the possibility of moving towards establishing an all-age school in Llanfair Caereinion. Based on these discussions, both governing bodies have agreed, in principle, to move towards establishing a bilingual all-age school in Llanfair Caereinion by 01 September 2022.

Estyn believes that the proposal is likely to maintain, or improve, the current standards in terms of education, provision, and leadership and management.

Description and benefits

The rationale for this proposal is coherent and the issues have been identified clearly. Evidence is based on facts and valid considerations.

The proposer has identified the expected advantages and disadvantages in comparison with the status quo. The proposer has considered:

Status quo – both schools continue to operate as standalone schools

All-age federation – Llanfair Caereinion C.P. School and Caereinion High School federate to create a federated all-age school in Llanfair Caereinion

All-age school – merge Llanfair Caereinion C.P. School and Caereinion High School to create a new all-age school in Llanfair Caereinion.

Officers from Powys County Council have conducted a SWOT analysis of these three proposals. The result of the activity is that the first two proposals have been disregarded, and that the third option provides the best standards, provision and leadership for the two existing schools.

The advantages of this proposal, namely the third of the proposals above, outline important issues, which include improving educational outcomes, educational provision, and leadership and management, to ensure more efficient educational provision and seamless transition between the two key stages. Overall, the considerations are firmly in favour of this proposal. Another core factor of this proposal is the fact that the council will continue to engage in dialogue with representatives of Llanfair Caereinion C.P. School and Caereinion High School, in order to continue to explore ways to develop and improve Welsh-medium provision in Llanfair Caereinion. This would contribute to the implementation of the Council's Welsh in Education Strategic Plan (WESP) and the Welsh Government's strategy to ensure a million Welsh speakers by 2050.

If the outcome of this is a need to change the school's language category, a further statutory process would be required to implement this. If required, this would be separate to the current process to merge the two schools, and a separate consultation exercise would be required.

The disadvantages of not accepting this proposal include important issues, such as a significant reduction in pupil numbers over time, challenging financial pressures, the need to provide attractive post-16 education, the challenges in terms of providing a comprehensive curriculum as the

secondary school has two streams, the need to improve the quality of education, and difficulties in terms of appointing a permanent headteacher at both schools. These issues are critical and need a prompt response. This proposal responds well to these issues.

The proposer has outlined the current profound challenges faces by both schools, and the forecasts that are based on robust facts do not provide a valid solution for the future. This proposal's strengths outweigh the weaknesses consistently in nearly all considerations. However, further information would be needed by all stakeholders in order to ensure that the schools merge smoothly.

Educational aspects of the proposal

The proposer has given appropriate consideration to the quality of outcomes, provision, and leadership and management.

The proposer has suggested that there will not be much change for the pupils that currently attend both schools, as they will continue to receive their education in the same buildings. There will be better opportunities to use the facilities at both sites and using staff expertise will benefit pupils' educational experiences. The school would continue to provide a broad curriculum, from the foundation phase throughout all stages at the school.

Another feature of teaching and learning experiences is the fact that it will create an opportunity to re-design the curriculum that is provided in Llanfair Caereinion, in order to meet the requirements of the new curriculum. This is outlined in 'Our National Mission', which sets the ambition for all schools to develop as learning organisations. Pupils would benefit from closer links between the various stages of education, and the opportunity to access specialist teachers. Primary age pupils would also benefit from the opportunity to access specialist facilities that are located at Caereinion High School, which may include physical education, science and technology facilities.

In terms of the effect on 11-16 and post-16 provision, it is identified that learners will continue to be able to pursue a similar range of courses to those that are available at present. However, it is not clear in the proposals how it is intended to implement the Council's Strategic Aim to 'improve access to Welsh-medium provision across all key stages', the Council's Welsh in Education Strategic Plan, and the Welsh Government strategy to ensure a million Welsh speakers by 2050.

Another important consideration is the emphasis on the better professional learning opportunities that will result from increasing the opportunities for

cross-phase working, opportunities to develop middle leaders more effectively, and more opportunities to develop middle leaders.

In terms of leadership, there would be an opportunity for high quality, robust and permanent leadership across all key stages. This will provide better opportunities for the headteacher to distribute key leadership tasks to a greater number of staff across all phases of education and, as a result, the governing body would have an improved opportunity to have strategic oversight of education for pupils from 4-18 years old.

It is suggested that there would be no negative effect on pupils from other primary schools in the catchment area that would attend the all-age school in Year 7. There would be no unnecessary disruption and the transition process would be co-ordinated tightly and sensitively.

Overall, the proposer proposes that the standards and progress of all pupils across all departments, including those that belong to particular groups, will improve and will have a positive effect over time.

It is stated that the proposal complies with the Council's Welsh in Education Strategic Plan for 2017-2020, and provides continuous access to primary and secondary Welsh and English-medium education in Llanfair Caereinion. It is anticipated that Welsh-medium provision at the new school will be at least as good as existing provision at both schools, following the possibility of sharing resources, staff and specialist facilities between the key stages.

Implementing the proposal would also provide an opportunity to strengthen the linguistic continuum between educational phases and improve the secondary school's Welsh ethos. The challenge will be to ensure that the provision offers equal access to those pupils who wish to be educated through the medium of Welsh, not only in terms of the subject areas but also in terms of the ethos and the everyday life of the school.

The proposer states that the new governing body of the new all-age school would appoint a headteacher, and would then work with the headteacher to develop the leadership, management and staffing structures for the new school. As part of this process, there would be an opportunity for the governing body to 'ringfence' all teaching and associated staff posts to staff currently employed within the existing schools. A new staffing structure would be implemented in line with relevant Human Resources policies for all members of staff. However, there is insufficient rigorous information with a tight timescale about how this proposal will affect all staff, particularly teaching staff, namely whether they will need to apply for their own jobs in order to remain in their current posts.

The result of establishing an all-age bilingual school would be ensuring one budget that would be managed by one headteacher and one governing body.

This would enable the school to operate more effectively in comparison with the current arrangements, and this should lead to financial savings by sharing staffing and other resources.

It is suggested that no construction work will be needed in the short term, as pupils will be taught in the existing buildings. It is noted that new accommodation will need to be provided in Llanfair Caereinion as part of the 21st Century Schools Investment Programme. Therefore, the proposal is not dependent on capital investment. It is noted that the condition of both buildings is poor, which echoes the need for future investment.

In terms of transport, it is noted that the Home to School Transport Policy will remain in operation, and it is not anticipated that any changes or adaptations will be needed in order to implement this proposal. Home to school transport arrangements would continue to be in accordance with the Council's Home to School Transport Policy and the Learner Travel (Wales) Measure 2008.

Both schools are in the amber category in terms of support capacity. Estyn judged outcomes to be 'Good' (Llanfair Caereinion C.P. School) and 'Adequate' (Caereinion High School – November 2013). Caereinion High School was placed in the category of schools that are in need of significant improvement. Caereinion High School was removed from Estyn monitoring activity in May 2018.

6. ISSUES RAISED DURING THE CONSULTATION PERIOD

The following headings and tables list the issues raised during the consultation period, and provide the local authority's response to these issues.

1 IMPACT ON PUPILS

1.1. Positive impact on pupils / learning opportunities

1.1.1 Improved facilities and equipment

| | | |
|---|---|--|
| 1 | The proposal could lead to primary students being exposed to better technology, computers, labs and workshops, including improved facilities for all students, including primary students | The Council notes these comments which outline the positive impact the proposal could have on pupils currently attending the two schools in Llanfair Caereinion. |
| 2 | Primary school students could use the high school facilities for Science, Technology and Languages | As above |
| 3 | Investment in sports facilities would allow for more sports development. | As above |
| 4 | Investment in facilities would lead to wider community use | As above |

1.1.2 Improved learning opportunities

| | | |
|---|--|---|
| 1 | The proposal could lead to primary students being exposed to different languages such as French and could help them learn languages easier | The Council notes these comments which outline the positive impact the proposal could have on pupils currently attending the two schools in Llanfair Caereinion, and on the school's ability to provide |
|---|--|---|

| | | |
|---|--|---|
| | | education which meets the requirements of the new Curriculum for Wales. |
| 2 | The proposal could lead to a secure post 16 learning and improve the Post-16 offer | As above |
| 3 | The proposal might lead to pupils wanting to learn more | As above |
| 4 | The proposal will help to facilitate the new Curriculum for Wales | As above |

1.1.3 Improved transition

| | | |
|---|---|--|
| 1 | I think that it also ensures a smooth transition up the school for those children attending since they can see the older children as they cope with the new challenges that those experiences bring. | The Council notes these comments which outline the positive impact the proposal could have on pupils currently attending the two schools in Llanfair Caereinion. |
| 2 | Primary pupils will transition easier to secondary school as they will be familiar with aspects, including the layout of the secondary school. | As above |
| 3 | Transition for Year 6 pupils is not easy due to differences in the work, amount of homework etc. Transition would be smoother in an all-age school as students would be working with the secondary phase before starting. | As above |

1.1.4 Opportunities for pupils of all ages to mix

| | | |
|---|--|--|
| 1 | Having an event with the primary and high school pupils together will introduce role models from secondary school and inspire primary students | The Council notes these comments which outline the positive impact the proposal could have on pupils |
|---|--|--|

| | | |
|---|--|---|
| | | currently attending the two schools in Llanfair Caereinion. |
| 2 | I think it is a good idea to have all ages of child in one school. It gives all children a greater understanding of what it is like to get on with children other than their peers | As above |
| 3 | There might be new opportunities to make new friends | As above |

1.1.5 Opportunities for older pupils to help younger pupils

| | | |
|---|---|---|
| 1 | Sixth formers had looked after younger pupils at events, and this could be replicated where Sixth formers help primary pupils | The Council notes this comment which outlines the positive impact the proposal could have on pupils currently attending the two schools in Llanfair Caereinion. |
|---|---|---|

1.1.6 Improved Welsh language opportunities

| | | |
|---|---|--|
| 1 | The proposal will help with education in both the primary and secondary and will help with learning Welsh at a younger age | The Council notes these comments which outline the positive impact the proposal could have on opportunities to use the Welsh language. |
| 2 | Pairing or grouping older students with younger students to promote and support using the Welsh language naturally | As above |
| 3 | The proposal to move Year 6 pupils adjacent to the high school also gives primary aged children the opportunity to converse in Welsh with older students therefore possibly strengthening their tie with the Welsh language | As above |

| | | |
|---|--|----------|
| | | |
| 4 | By establishing a strong bilingual school, I am of the opinion that there will be more opportunities for people to learn, speak and use Welsh. | As above |

1.2 Concerns about possible negative impact

1.2.1 Concerns about older and younger pupils being part of one school

| | | |
|---|--|---|
| 1 | Unsure about having Year 1 pupils and Year 11 pupils together in one school. | <p>The proposal is to establish the new all-through school in the buildings currently occupied by Llanfair Caereinion C.P. School and Caereinion High School. Primary aged pupils would continue to attend the current site of Llanfair Caereinion C.P. School, whilst secondary aged pupils would continue to attend the current site of Caereinion High School. Therefore, it is unlikely that young children would find themselves surrounded by older children.</p> <p>One benefit of an all-age school is the ability for pupils from the primary sector to use facilities in the secondary school. Should the proposal be implemented, it is anticipated that there would be additional opportunities for primary aged pupils to use secondary facilities, however they would be fully supervised at all times.</p> |
| 2 | I prefer separation as older children will influence younger ones and there will be more scope for peer pressure, bullying, rough play and language use etc. | As above |

| | | |
|---|---|----------|
| 3 | It depends on how much primary pupils would be affected by secondary pupils. It could have a negative effect. | As above |
| 4 | Would we play on the same yard as Year 11? | As above |

1.2.2 Concerns about bullying

| | | |
|---|------------------------|--|
| 1 | There could be bullies | Should the Council proceed with the proposal to amalgamate the two schools, the new school would be responsible for ensuring the well-being of all pupils and to manage their behaviour. All schools are required to have a bullying policy, and the school would be required to operate in accordance with its bullying policy. |
|---|------------------------|--|

1.2.3 Concerns about teaching and homework

| | | |
|---|---|--|
| 1 | Primary school students may have to learn more secondary school level work at a younger age | The Council notes these concerns. Should the proposal be implemented, primary aged pupils would continue to access primary provision on the current site of Llanfair Caereinion C.P. School, whilst secondary aged pupils would continue to access secondary provision on the current site of Caereinion High School. Whilst implementation of the proposal would provide additional opportunities for sharing of staff and resources across the school, the aim of this is to enhance the learning opportunities available to learners. |
|---|---|--|

| | | |
|---|--|----------|
| 2 | The work might change and there might be more homework | As above |
| 3 | There might be different teachers in the school than we have already | As above |

1.2.4 Concern about the impact on other feeder primaries

| | | |
|---|---|--|
| 1 | It is important to remember that the current high school serves a large geographical area, and lots of feeder primary schools | <p>The Council notes these comments regarding the possible impact of the proposal on pupils attending feeder primary schools other than Llanfair Caereinion C.P. School.</p> <p>The Council acknowledges on pages 28-29 of the Consultation Document that implementation of the proposal would impact on pupils attending other primary schools in the Llanfair Caereinion catchment as they would be transferring to an all-age school in year 7 rather than transferring to a high school. However, the Council does not anticipate that the impact on them would be negative.</p> <p>As indicated in the Consultation Document:</p> <p>'The transition arrangements for pupils attending other primary schools in the catchment area would need to be carefully managed, to ensure that the pupils are fully integrated into the school, and are not disadvantaged in any way compared with pupils that attended the primary phase of the all-age school.</p> |
|---|---|--|

| | | |
|---|--|--|
| | | The proposal to establish a new all-age school in Llanfair Caereinion also provides an opportunity to strengthen the current relationship with other primary schools in the catchment area, in order to provide improved opportunities to pupils attending these schools, and to provide improved transition arrangements for these pupils.' |
| 2 | Other feeder primaries might be forgotten, and those students should still be able to access transition events. | As above |
| 3 | We have heard that the data suggests that it improves the transition from primary schools from Llanfair Caereinion, but what about the 2/3rds that don't come from the primary? | As above |
| 4 | I am not convinced that the 'improvement of transition links' can be used as a main 'strength', because I feel that the same opportunities should be afforded to all feeder schools as a matter of fairness, not just to the KS2 children in the new all-age school. | As above |
| 5 | There could be more details about including those pupils from other primary schools to ensure full inclusion. | As above |

1.2.5 Concern about transition for pupils in the all-age school

| | | |
|---|--|----------------|
| 1 | When we move to Year 7 it won't be exciting as we will be in the same school | Comment noted. |
|---|--|----------------|

2 IMPACT ON STAFF

2.1 Queries about the impact on staff

| | | |
|---|---|--|
| 1 | If the school closes in 2022, what happens to the staff's contracts? | Arrangements for the appointment of staff to the new structure would be agreed by the Temporary Governing Body once established. All current members of staff appointed to posts within the new school would have their continuity of service protected. |
| 2 | We have heard that our contracts would be continuous, but what if our role isn't there anymore? What will happen then with contracts? | As above |
| 3 | Will staff have to re-apply for their jobs, within the new staffing structure? | As above |
| 4 | What would happen to the contracts of colleagues who were perhaps on maternity or sickness leave, in the transition between the current schools and the new all-through school? | Specific arrangements would be put in place for any members of staff who are absent from work during to sickness or maternity so that they can engage and participate in any staff consultation exercise during the transition period. |
| 5 | What would be the capacity of the all-through school, in terms of the number of staff? Would there be a similar capacity in terms of staff members, or would it be different? | The staffing structure for the new school would be agreed by the Temporary Governing Body, and would need to be within the budget available to the new school. |
| 6 | Is there Transformation funding available for the merging of the two schools, to safeguard jobs? | Transformation Funding is available to support the school with some aspects relating to the transition to a new school e.g. ICT arrangements, signage, to release some members of staff to work on transition |

| | | |
|----|---|--|
| | | to the new school. This funding would not be available to safeguard jobs. |
| 7 | Would staff specialism be protected – especially among teaching assistants? | This would be a decision for the Temporary Governing Body once it was established. |
| 8 | Would staff be expected to work on both sites? | This would be a decision for the Temporary Governing Body. However, whilst it is anticipated that teachers would undertake the majority of their teaching role teaching the age range they have qualified for, some “cross phase teaching” is envisaged as a development opportunity for staff, and to provide enhanced learning opportunities for pupils. |
| 9 | If you were a maths teacher for example, would it be that you teach in the primary phase, secondary phase, or both? | As above |
| 10 | I have already been through this process previously and I think we need to learn from the processes previously and what we have learned and could have been done better and what I find from the staff especially that the openness and honest approach is the best approach, especially with the staffing process as that is where the anxiety seems to be down to redundancy and if they are going to have a job. | Comment noted. |

2.2 Additional opportunities for staff

| | | |
|---|--|---|
| 1 | I believe that staff will be able to share expertise in order to offer students the best possible learning experience. | Comment noted. The Council agrees that implementation of the proposal would provide |
|---|--|---|

| | | |
|---|--|---|
| | | additional opportunities to share staff expertise, providing additional opportunities for staff and enhanced learning opportunities for pupils. |
| 2 | The proposal will be an opportunity to change the staffing structure to reflect the new curriculum and to share expertise across both schools. | As above |
| 3 | If there's not one already, there could be a programme in place for members of staff who are not completely fluent in Welsh to develop their Welsh language further. | Comment noted. The Council is keen to provide opportunities to any staff wishing to develop their Welsh language skills to do so, and will work with the temporary governing body of the new school to identify opportunities to enable staff to develop their Welsh language skills. |

3 COMMENTS RELATING TO LEADERSHIP AND GOVERNANCE

3.1.1 Opportunity to improve leadership

| | | |
|---|---|--|
| 1 | The proposal will provide a permanent leadership structure providing solid continuity for the future and scope for secure future planning with an established team. | The Council notes these comments which outline the positive impact the proposal could have on leadership arrangements. |
| 2 | Improvements would hopefully result from a more secure management of the schools with a permanent headteacher. | As above |

3.1.2 Impact of leadership on Welsh-medium provision

| | | |
|---|---|---|
| 1 | It will be necessary to ensure that staff members in leadership roles are bilingual or the use of English will be the norm. That would have a very negative effect on the school. | The Council notes these comments. Should the Council proceed with the proposal to establish an all-age school, a temporary governing body would be established which would be responsible for staffing arrangements at the new school, supported by the Council's Challenge Advisors. |
| 2 | Weak leadership would allow English language pupils to destabilise the desire and efforts of the Welsh language pupils and learners, in particular the primary pupils. | As above |
| 3 | If there is strong leadership and sufficient funding (in favour of the Welsh) it is possible to provide a comprehensive education over a wide range of subjects, and with the support of the Language Charter secure a strong Welsh language ethos. | As above |
| 4 | The Governors, Headteacher, Teachers and senior pupils need to provide strong leadership to ensure the development of Welsh-medium provision. | As above |

3.1.3 Queries relating to the temporary governing body

| | | |
|---|--|---|
| 1 | I believe that the new Governing Body should represent the whole catchment area with representation from Welsh-medium primary schools and bilingual members. | Comments noted. Should the Council proceed with the proposal, the Council would be responsible for the establishment of the temporary governing body, which would be done in accordance with the Government of Maintained Schools (Wales) Regulations 2005. |
|---|--|---|

| | | |
|---|---|--|
| | | The composition of the temporary governing body would be as per the table on page 30 of the Consultation Document. |
| 2 | Could we have a bit more detail on how the interim governing body is established? | As above |

4 REFERENCE TO THE COMMUNITY

4.1 Impact on the community

| | | |
|---|---|--|
| 1 | It is an opportunity to include the wider community with the school at the heart of the area | Comments noted. Should the Council proceed with the proposal, the Council and Temporary Governing Body would ensure numerous opportunities for the community to be involved in establishing the new school to ensure that they are fully involved in this process. |
| 2 | Parents need to be part of the school community – that is, that they don't lose their connection with the school from the primary phase to the secondary phase. | As above |
| 3 | Such a proposal will support the school as a centre of excellence for sport, culture and the arts, offering increased opportunities for the whole community. | As above |

4.2 Need to work with the community to develop bilingualism

| | | |
|---|---|---|
| 1 | Build upon and maintain the importance of Welsh to the community. | The Council notes these comments regarding the need to work with the community to develop bilingualism in the new school. |
| 2 | The new school's ethos and vision needs to be clear from the beginning. The majority of the community need to buy in to this. There needs to be a natural development but with a strong and clear emphasis on developing bilingualism. | As above |
| 3 | The bilingual ethos needs to develop naturally, with a continuous emphasis on developing Welsh-medium educational opportunities. Need to be careful regarding the community's readiness to accept a Welsh-medium secondary school immediately. 2 of the schools that feed the high school are English-medium. | As above |
| 4 | Careful promotion work is needed within the community on the benefits of bilingualism academically, socially and economically. | As above |

4.3 Other

| | | |
|---|---|---|
| 1 | <p>In terms of the community, whilst in terms of primary it is geographically based, in terms of the high school it is much larger community, and it includes Newtown who represent quite a large percentage of the high school and need to be involved in this consultation and need to be engaged in the process as well to feel part of the community.</p> <p>There is a transportation issue with people in the wider community who don't naturally fall into the area we serve and if we are going to strengthen that then it needs to be something that is looked at as</p> | <p>Parents of pupils in all of Caereinion High School's feeder schools were informed about the consultation. All governing bodies of these feeder schools were also notified of the consultation.</p> <p>The current Home-to-School Transport Policy states that free home-to-school transport is provided to eligible learners 'to their nearest suitable or catchment school in their language of choice'. A new Policy comes into force in September 2021 which states, 'free home-to-school transport will be</p> |
|---|---|---|

| | | |
|--|---|---|
| | <p>soon as possible. We do have pupils who are missing out and I am concerned that we are failing those pupils now.</p> | <p>provided for eligible learners ‘to their nearest suitable or catchment school’ and states that ‘free home-to-school transport will be provided to learners wishing to have their education through the medium of Welsh’.</p> |
|--|---|---|

5 COMMENTS RELATING TO BUILDINGS

5.1 Issues with the current buildings / need for investment

| | | |
|----------|---|--|
| <p>1</p> | <p>I am concerned that the quality of the buildings is poor – investment is needed so that the buildings can meet the requirements of the new curriculum.</p> | <p>The Council notes these comments regarding the current buildings in Llanfair Caereinion. The current proposal is to establish a new all-age school in the buildings currently occupied by Llanfair Caereinion C.P. School and Caereinion High School. However, the Council also acknowledges that there is a need to improve the quality of accommodation at both schools in the longer term.</p> <p>The Council has recently launched a new Transforming Education Strategy which includes an aspiration to develop new purpose-built all-age schools across Powys, that will not only provide state of the art facilities for teaching and learning, but also childcare and early years provision, community and leisure facilities, multi-agency areas that can provide support for learners and their families and SEN/ALN facilities of the highest quality.</p> <p>The Council’s long term aspiration is to ensure that these facilities are available to all Powys learners.</p> |
|----------|---|--|

| | | |
|---|---|----------|
| | | |
| 2 | I believe the building condition of both sites needs major improvement. Any plan delivered should address this problem. | As above |
| 3 | Both schools would benefit from a new building as both the primary and high school are in poor condition - if not possible then they both need funding to improve the current buildings. | As above |
| 4 | The site and building of the secondary school, especially that of the original building, is particularly challenging to any pupil, parent or staff member with a physical disability. | As above |
| 5 | The yard needs full renewal, various leaks over the years. Some of the accommodation in the high school could also be improved - windows in need of repair in the gym, canteen. Various leaks - sports hall/leisure centre. | As above |
| 6 | This is an opportunity to invest in the buildings. | As above |

5.2 Concerns about road safety

| | | |
|---|---|--|
| 1 | If the two buildings and two sites are to remain as they are, with children frequently accessing both sites, what measures will be taken to ensure the road safety of the children moving between both sites? | The Council will need to carry out a safeguarding assessment and will work with the temporary governing body to put in place appropriate measures to ensure children can move safely between both sites. |
| 2 | There is a through road that passes in between both schools and although there is traffic control during school pick up and drop off times, what safety measures will be put in place through the school day? | As above |

| | | |
|---|--|--|
| | | |
| 3 | There is inadequate parking for parents who drop off children at school and as vacant seat provision has been removed, how many more parents are transporting children to school daily – this increases risk to child road safety. | It is not expected that an all-age school would increase the numbers of parents transporting children to school. |

6 REFERENCE TO COUNCIL STRATEGIES

6.1 Transforming Education Strategy

| | | |
|---|--|---|
| 1 | The joining of these two schools does not cause any problems and partially answers Strategic Aim 1 of Powys' Transforming Education Strategy. However, it is unclear how this will develop any of the other aims noted in this document. | <p>The Council notes these comments regarding how the current proposal links with the Council's Transforming Education Strategy. The Council acknowledges that the current proposal for Llanfair Caereinion addresses Strategic Aim 1 – To improve learner entitlement and experience - in particular.</p> <p>In parallel to the current proposal for Llanfair Caereinion, other work is ongoing across Powys which addresses all of the Strategic Aims.</p> <p>The impact of the proposal on 14 - 19 provision is considered on pages 38-40 of the consultation document where it is noted that that implementation of the current proposal is unlikely to impact on the educational and training achievements of 16 – 19-year olds, the range of courses and qualifications available, or increase participation in learning amongst this age group. However, the Council is taking a county-wide approach to improving learner entitlement and experience for post-16 learners and</p> |
|---|--|---|

| | | |
|---|--|--|
| | | <p>a separate workstream has been established to address this Strategic Aim.</p> <p>This proposal is to establish an all-age dual-stream school in Llanfair Caereinion. However, the Consultation Document clearly states the Council's intention regarding Welsh-medium provision: the Council recognises the strength of Welsh-medium provision in the Caereinion area, and that the Welsh-medium provision at Caereinion High School is central to the Council's aspiration to provide access to enhanced Welsh-medium secondary provision. The Council's intention is to take this forward using a phased approach with continued dialogue with representatives of the two schools and the community to explore ways to develop and enhance the Welsh-medium provision in Llanfair Caereinion. If the outcome of this is the need to change the school's language category, a further statutory process would be required to implement this.</p> |
| 2 | It is not clear how the proposal will address Strategic Aims 2 and 3 of Powys' Transforming Education Strategy. | As above |
| 3 | Isn't Powys aiming to improve the opportunities and provision for post 14 and post 16? As there isn't much change for these age categories in this proposal. | As above |
| 4 | The Strategy for Transforming Education in Powys 2020-2030 has been launched and yet again Powys County Council are not using | Within Strategic Aim 1 – to improve learner entitlement and experience – there are two Strategic |

| | | |
|--|--|---|
| | <p>the principles set out in this strategy to look at the small school provision issues in the Caereinion catchment and introduces changes sooner rather than later.</p> | <p>Objectives – the first relates to establishing all-age schools and the second is to reorganise and rationalise primary provision. Due to the significant number of primary schools within Powys, the Council is currently reviewing schools across several catchment areas across the county in order to bring forward proposals for consultation.</p> |
|--|--|---|

6.2 WESP (Welsh in Education Strategic Plan)

| | | |
|---|--|---|
| 1 | <p>Extremely disappointed that the Local Authority promise to create a 2B school in Caereinion by 2020 has not happened.</p> | <p>The Council notes this comment and accepts that it has not delivered a Category 2B School in Caereinion by 2020. However, the Consultation Document clearly states that the Council recognises the strength of Welsh-medium provision in the Caereinion area, and that the Welsh-medium provision at Caereinion High School is central to the Council's aspiration to provide access to enhanced Welsh-medium secondary provision. The Council's intention is to take this forward using a phased approach with continued dialogue with representatives of the two schools and the community to explore ways to develop and enhance the Welsh-medium provision in Llanfair Caereinion. If the outcome of this is the need to change the school's language category, a further statutory process would be required to implement this.</p> |
| 2 | <p>With the publication of Powys' Welsh in Education Strategic Plan in 2017, thought the dream to establish a Welsh-medium secondary school in Powys could be realised. However, this is not the case.</p> | <p>As above. Significant work is also ongoing within the Council to take forward Strategic Aim 3 of the new Strategy for Transforming Education in Powys, which</p> |

| | | |
|---|---|--|
| | | relates to Welsh-medium provision. This includes a formal consultation on the Council's first proposal to change an all-age school's language category, along with potential plans for an all-age Welsh-medium school in Mid Powys. |
| 3 | This "all-age" model will strengthen the status of the English language to the detriment of the Welsh language, thereby increasing the need for a designated secondary school in the Severn Valley area. This new school, (which was included in principle in the latest version of WESP), should meet the needs of the parents of children attending Welsh-medium schools in the catchment, thereby offering a sensible continuum to Welsh language education. | <p>The Council does not agree that an all-age model will strengthen the status of the English language to the detriment of the Welsh language – this has not been the case with the all-age school at Ysgol Bro Hyddgen and the Council is now formally consulting on changing its language category.</p> <p>However, the Council accepts that it has not delivered on the commitment made in its WESP 2017 – 2020 to develop a new designated Welsh-medium secondary school in the Severn Valley area but will be taking a phased approach to the development of Welsh-medium provision in Llanfair Caereinion. If the outcome of this is the need to change the school's language category, a further statutory process would be required to implement this.</p> |

7 REFERENCE TO ESTYN

| | | |
|---|--|--|
| 1 | The authority has missed an opportunity to achieve one of Estyn's recommendations. Parents and pupils who have chosen Welsh-medium education will have lost fundamental rights and will have inferior treatment. | The Council notes these comments regarding Estyn's inspection of Powys Education Services which was carried out in 2019. |
|---|--|--|

| | | |
|---|--|--|
| | | <p>In response to Estyn’s findings, the Council has launched a new Strategy for Transforming Education in Powys, which includes a clear commitment to improving Welsh-medium provision in Powys.</p> <p>As required by the School Organisation Code, Estyn’s response to the current proposal to establish an all-age school in Llanfair Caereinion is included on page 17 of this report.</p> |
| 2 | <p>Estyn in its report on Education Services in Powys in June 2019 states that “the authority's record in stimulating the growth of Welsh-medium education is weak” and that “as a result the proportion of pupils receiving their education through the medium of Welsh has remained static over recent years”.</p> <p>In the same report Estyn states that "significant changes are needed to the Welsh-medium offer in Powys in order to reverse the trends of the last few years and ensure that all Powys learners can access comprehensive Welsh-medium provision throughout their educational careers”.</p> <p>The current proposal is a very poor and limited response to the Estyn report on the authority.</p> | As above |
| 3 | <p>Powys has decided to ignore the advice of Estyn and is going ahead to do nothing of worth to improve the provision of educational standards with the intention of keeping the “status quo” in Llanfair Caereinion.</p> <p>Why does Powys think that it knows better than Estyn?</p> | As above |

| | | |
|---|---|----------------|
| 4 | For many years, the proposals in relation to secondary Welsh education in Powys has been fragmented and unsettled and it was therefore no surprise that Estyn made a recommendation in its latest report of Summer 2019 to improve Welsh education throughout the county. | Comment noted. |
|---|---|----------------|

8. FINANCIAL QUERIES

8.1 Concerns that the proposal is being driven by finance/making savings

| | | |
|---|---|---|
| 1 | I think it's purely a financial decision and being driven in a bid to save money rather than to provide the best education for our children. | Whilst it is anticipated that implementation of the proposal would result in a small saving to the Council of approximately £12k per annum, the proposal is not a cost cutting exercise. The aim of the proposal is to improve educational opportunities for learners in Llanfair Caereinion. |
| 2 | I understand that the Council are in a difficult position and need to cut vast amounts of money. Estyn reports and Education in Powys are not great, things need to change. It's so difficult being such a rural spread-out area. | As above |

8.2 Queries relating to budgets

| | | |
|---|--|--|
| 1 | I have concerns around the budget. The primary school is currently within budget and has made some very tough decisions around staffing to achieve this. The high school is in the red. Will the primary school's budget be protected? | If Cabinet agree to implement the decision, then the new school would be funded as one school. The school would have one governing body, one delegated budget and one staffing structure. The governing body would need to ensure that the |
|---|--|--|

| | | |
|---|---|--|
| | | funding available was allocated in a way which would ensure the best possible learning opportunities for all pupils. |
| 2 | How will the budget work? | As above |
| 3 | Stakeholders need to have a much clearer picture on the proposed budgets for an all through school. | As above |
| 4 | In terms of the financial position in the first year will the schools start with a clean slate whether there is a surplus or deficit? | If Cabinet agree to implement the decision, then the new school will have one delegated budget and any deficits or surpluses from either Llanfair Caereinion C.P. School or Caereinion High School will not be carried over. |

8.3 Queries relating to savings and closure of other schools

| | | |
|---|--|--|
| 1 | Budgets per pupil vary between £3,127 and £7,877 per pupil in the primary sector – is this fair? There are 33 small schools in Powys and 21 of them have fewer than 50 pupils – this is where the Council will make savings. | The Council notes these comments. The Council's new Transforming Education Strategy clearly identifies that there are too many schools in Powys and includes an objective to 'reconfigure and rationalise primary provision'. |
| 2 | Some primary schools have already been closed, do any more need to be closed in order to save money? | As above |
| 3 | From a cost/benefit analysis it would appear on considering the documentation provided that there is financial benefit in creating an all through school | Comment noted. As indicated in the Consultation Document in respect of this proposal, it is anticipated that the proposal to establish an all-age school in Llanfair Caereinion would result in a small saving to the Council of approximately £12k per annum, and |

| | | |
|--|--|---|
| | | would also provide additional opportunities for the school to operate more efficiently. |
|--|--|---|

8.4 Queries relating to transition funding

| | | |
|---|--|---|
| 1 | Would additional funds be available to support the transition, as well as the budget given from the formula? | Transformation Funding is available to support the school with some aspects relating to the transition to a new school e.g. ICT arrangements, signage, to release some members of staff to work on transition to the new school. This funding would not be available to safeguard jobs. |
|---|--|---|

9 COMMENTS RELATING TO THE ALL-AGE SCHOOL MODEL

9.1 Support for the all-age model

| | | |
|---|--|--|
| 1 | I am happy for the schools to merge and a new all-age school established provided it is kept bilingual – given the right education with proficient teachers both first and second language pupils can learn and will continue to speak Welsh. | The Council notes these comments which support the proposal to establish a dual stream all-age school. |
| 2 | For those pupils that gone through the medium of Welsh through primary school and are perhaps lacking confidence to continue their education through the medium of Welsh, the all-age school would support these pupils and they would also have the opportunity to go into the English stream, if the case arose. | As above |

| | | |
|---|--|----------|
| 3 | Given the steady decline in numbers for both institutions it is a chance to reverse this trend with a more robust organisation with shared strategic aims and pooled financial and physical resources. | As above |
|---|--|----------|

9.2 Concerns about the all-age model

| | | |
|---|--|--|
| 1 | This seems a huge process which will have a negative impact on staff, pupils and parents for little benefit. | The Council notes these comments. As indicated in the Consultation Document in respect of this proposal, the Council's view is that there are many benefits associated with the proposal to establish a new all-age school in Llanfair Caereinion. |
| 2 | Don't agree with a new all-age school | As above |
| 3 | I think it would be important for the primary school to retain autonomy in the day to day running of the school, so that procedures/decisions about issues directly affecting the school do not have to go through extended processes to be addressed/ decided, even if this means separate governing body decision making/ subgroups etc. | <p>The Council notes these concerns about the possible impact of the proposal on primary provision in particular.</p> <p>If Cabinet agree to implement the decision, then the new school would have one governing body, one delegated budget, one staffing structure and one leadership team. The governing body and leadership team would need to ensure that the new school operates effectively, ensuring the best possible learning opportunities for pupils in all year groups.</p> |
| 4 | I feel that having shared leadership arrangement/ governing body between the two schools has the potential to remove a sense of autonomy from the day to day running of the primary school especially. | As above |

10 COMMENTS ABOUT THE CURRENT PROVISION

10.1 General comments about the current provision

10.1.1 Negative comments about the current provision

| | | |
|---|---|--|
| 1 | There isn't a problem in the primary school it's the high school that needs sorting. | Following a monitoring visit by Estyn in May 2018 Her Majesty's Chief Inspector of Education and Training in Wales removed Caereinion High School from the list of schools requiring significant improvement. This decision was based on the fact that the school had made significant progress on all five of the recommendations made by inspectors following the core inspection and had improved standards and attendance in 2017, bringing them broadly in line with similar schools nationally. Since then the school has continued to make progress in key areas including leadership and self-evaluation. In seeking to establish an all age school the local authority has confidence that the new school will benefit from the significant expertise which currently exists at both primary and secondary level and will ensure that all pupils who attend the new school will make good progress in the future. |
| 2 | They should concentrate on the high school bringing the standard up there. Making sure the teachers are adequate to teach the correct subject in the correct way. | As above |
| 3 | The school isn't providing my children with the support they need with their education. They don't listen to their concerns or address | As above |

| | | |
|---|---|----------|
| | problems they are having with the topics in lessons. My children also have been bullied for the day they started and 3 years on still nothing has been done about it. I feel that the problems the school has needs to be address, before more children and their needs are added to the mix. | |
| 4 | Focus should be on providing top class education in both schools. At the moment there is too much allowance for mediocrity. | As above |

10.2 Comments about the current Welsh-medium provision

10.2.1 Positive comments about the current Welsh-medium provision

| | | |
|---|--|--|
| 1 | As a category 2B school, the only one in North Powys, there is a good selection of subjects to A level taught in both Welsh and English. | The Council notes these comments. The Consultation Document clearly states that the Council recognises the strength of Welsh-medium provision in the Caereinion area, and that the Welsh-medium provision at Caereinion High School is central to the Council's aspiration to provide access to enhanced Welsh-medium secondary provision. The Council's intention is to take this forward using a phased approach with continued dialogue with representatives of the two schools and the community to explore ways to develop and enhance the Welsh-medium provision in Llanfair Caereinion. If the outcome of this is the need to change the school's language category, a further statutory process would be required to implement this. |
|---|--|--|

| | | |
|---|--|----------|
| 2 | The existing school already has a positive effect to the Welsh language and careful approach is needed to continue the organic growth. | As above |
| 3 | Caereinion Secondary School currently provides the best Welsh education in North Powys, and it is important that this continues. | As above |
| 4 | Caereinion High school has an excellent track record for providing Welsh education for all learners regardless of their 'home language'. This can be confirmed by the number of Welsh 2nd language students that have been offered to conduct their further education studies through the medium of Welsh. | As above |

10.2.2 Negative comments about the current Welsh-medium provision

| | | |
|---|--|--|
| 1 | During the decades the Welsh language has not thrived, there are a number of reasons for this, but the main reason is that Llanfair Caereinion is too far from the population of Powys. | Comment noted. |
| 2 | Many children are leaving primary school, after learning Welsh for 6 years, are either going to Llanidloes high school or an English speaking high school because Llanfair Caereinion is so poor. | The Council note this comment. In contrast to other areas of Wales, there has been no growth in Welsh-medium pupil numbers in Powys over recent years. Significant changes are needed to the Welsh-medium offer in Powys to reverse the trend of the last few years and ensure that all Powys learners can access comprehensive Welsh-medium provision throughout their educational careers. |
| 3 | Currently pupils in the high school are not given opportunities to access all subjects through the medium of Welsh – how will this proposal ensure all pupils are provided with equal opportunities? | Should the Council proceed with the current proposal to establish an all-age school in Llanfair Caereinion, the temporary governing body will be key in |

| | | |
|---|--|---|
| | | <p>establishing the ethos of the new school. The Council would work with the temporary governing body to ensure that the need to improve and enhance the Welsh-medium provision at the school will be a key consideration when establishing the new school.</p> |
| 4 | <p>Welsh medium education in primary schools is growing, but with many parents unhappy with Llanfair, they are not following it through to high school which is a massive disappointment, and also damaging to our Welsh language.</p> | <p>Should the Council proceed with the current proposal to establish an all-age school in Llanfair Caereinion, the temporary governing body will be key in establishing the ethos of the new school. The Council would work with the temporary governing body to ensure that the need to improve and enhance the Welsh-medium provision at the school will be a key consideration when establishing the new school.</p> |
| 5 | <p>A new Welsh medium high school is well overdue in our area, Llanfair Caereinion high school has let many children down in with regards to Welsh education choices.</p> | <p>The Consultation Document clearly states that the Council recognises the strength of Welsh-medium provision in the Caereinion area, and that the Welsh-medium provision at Caereinion High School is central to the Council's aspiration to provide access to enhanced Welsh-medium secondary provision. The Council's intention is to take this forward using a phased approach with continued dialogue with representatives of the two schools and the community to explore ways to develop and enhance the Welsh-medium provision in Llanfair Caereinion. If the outcome of this is the need to change the school's language category, a further statutory process would be required to implement this.</p> |

| | | |
|---|--|---|
| 6 | <p>At the moment, it appears that the range of subjects that are offered through the medium of Welsh are shrinking, and the range in its whole becoming more limited. In the schools as they currently are, on the school yard and outside Welsh lessons, it is the English language which is common. This is not true bilingualism.</p> | <p>The Council agrees with this statement, as outlined in the WESP 2017-20 as follows:</p> <p><i>'The authority agrees with the view of Welsh Government that pupils are more likely to become fully bilingual after attending Welsh-medium schools, particularly when they come from non-Welsh speaking homes, and acknowledges that designated Welsh-medium schools are the preferred model of delivery for Welsh-medium education. The authority acknowledges that a fundamental change is required to the method of delivering Welsh-medium education in Powys, to ensure that all learners can access high quality, robust provision from the early years onwards. In order to move towards a new delivery method, the authority is fully committed to establishing new designated Welsh-medium schools in both the primary and secondary sectors, and will direct capital investment to support this commitment, where appropriate. In addition, the authority will work in partnership with Mudiad Meithrin in order to provide access to high quality Welsh-medium early years provision.'</i></p> <p>This statement has recently been reiterated in the recently approved 'Vision for increasing the number of fully bilingual learners in Powys' that will underpin the development of a new WESP and recognises the limitations of the dual-stream model in developing fully bilingual learners.</p> |
|---|--|---|

| | | |
|---|---|---|
| 7 | Llanfair does not provide a fair language continuation to our pupils who speak Welsh. | The Council notes this comment. |
| 8 | In some subjects, the secondary school struggles to get Welsh teachers. | The Council recognises that there it is difficulty in recruiting Welsh-speaking teachers, not only in Powys but across Wales. |

11. CRITICISM OF THE PROPOSAL / THE COUNCIL

11.1 Criticism of the proposal

| | | |
|---|---|---|
| 1 | The intention to create a lifelong school in Llanfair Caereinion will not solve any of failings (too many vacant places, lack of sufficient range of English-medium subjects and a wholly ineffective Welsh-medium provision) and it is therefore reasonable to ask what is the logic for this consultation which will not make any change for the better or respond to any of the above mentioned challenges. It is likely that its only intention is to keep a secondary school on the Llanfair site which is more important to councillors than the education of children. | <p>The Council notes these comments. The reasons for the proposal to establish an all-age school in Llanfair Caereinion are outlined in the consultation document.</p> <p>Whilst the Council acknowledges that the current proposal to establish an all-age school in Llanfair Caereinion will not address all challenges associated with the school, the Council's view is that implementation of the proposal would provide a more efficient structure for delivering education in Llanfair Caereinion, enabling improved learning opportunities to be offered to pupils.</p> |
| 2 | The proposal to establish a dual stream all-through school in Llanfair would hinder the aspiration and the need to establish a designated Welsh-medium secondary school to serve Welsh-speaking pupils in north-east Powys. | The Council notes these comments in respect of the language category of the proposed new school. The current consultation is focussed on merging the two current schools to establish a new all-age school in Llanfair Caereinion. |

| | | |
|---|---|--|
| | | <p>The Council has acknowledged the need to further develop Welsh-medium provision in Powys, both in the ‘Strategy for Transforming Education in Powys’ and in the newly launched ‘Vision for increasing the number of fully bilingual learners in Powys’, and will continue to work with key stakeholders in order to achieve this.</p> <p>The Consultation Document clearly states that the Council recognises the strength of Welsh-medium provision in the Caereinion area, and that the Welsh-medium provision at Caereinion High School is central to the Council’s aspiration to provide access to enhanced Welsh-medium secondary provision. The Council’s intention is to take this forward using a phased approach with continued dialogue with representatives of the two schools and the community to explore ways to develop and enhance the Welsh-medium provision in Llanfair Caereinion. If the outcome of this is the need to change the school’s language category, a further statutory process would be required to implement this.</p> |
| 3 | It is disappointing to see that the proposal offers nothing new in the context of the language provision to pupils in the Llanfair Caereinion area. It does not strengthen the linguistic provision for pupils in the Llanfair Caereinion area, and neither does it diminish the risk of inconsistent and inferior provision. It does no justice to what pupils in Powys deserve and are entitled to. | As above |
| 4 | My main objection is to the recreation of a bilingual school with average expectations for the pupils. | As above |

| | | |
|----|---|---|
| | | |
| 5 | In both schools, there are more children in the Welsh stream than in the English stream – yet there are no plans in place to strengthen or to develop the Welsh aspect. | As above |
| 6 | The proposal will make the current failing system on language entrenched. | As above |
| 7 | The proposal will be detrimental in stopping progress of growing the Welsh language. | As above |
| 8 | This is a golden opportunity to change the school's medium of learning to Welsh. The consultation document provides numerous reasons for this to happen, but they have been ignored and this reflects the obvious lack of ambition by our County Council towards Welsh education. | As above |
| 9 | The proposal would mean that the status quo would continue, despite the Council being told for over a decade that Welsh provision needs developing in North Powys. | As above |
| 10 | The proposal to establish an all-age dual stream school in Llanfair does nothing more than keep the status quo and confine Welsh medium pupils in a school that can never be as effective as a Category 1 or 2A school in providing Welsh medium education. | As above |
| 11 | With 95% of Welsh-medium pupils coming from non-Welsh speaking families, they need to be immersed in a Welsh school, with everything through the medium of Welsh. This is the only way to ensure confident citizens. This proposal does nothing to change the current position. Indeed, there is no guarantee that the Headteacher's job will be advertised as Welsh essential. | The Council agrees that immersion in the Welsh language is the most effective way of supporting pupils from non-Welsh speaking families. However, as stated in the Consultation Document, the Council recognises the strength of Welsh-medium provision in the Caereinion area, and that the Welsh-medium |

| | | |
|----|--|--|
| | | <p>provision at Caereinion High School is central to the Council's aspiration to provide access to enhanced Welsh-medium secondary provision, and a Welsh-speaking Headteacher is essential to delivering this aspiration. However, the temporary governing body would be responsible for the recruitment of a headteacher, and the Council would strongly advise that, in order to meet the Council's aspirations for the new all-age school in Caereinion, the position should be advertised as Welsh essential.</p> |
| 12 | <p>All pupils are currently given many opportunities to use the Welsh language through many different activities - how is the proposal for a new all-age school going to make a difference?</p> | <p>Should the Council proceed with the current proposal to establish an all-age school in Llanfair Caereinion, the temporary governing body will be key in establishing the ethos of the new school. The Council would work with the temporary governing body to ensure that the need to improve and enhance the Welsh-medium provision at the school will be a key consideration when establishing the new school.</p> |
| 13 | <p>The proposal will not improve the provision for pupils in Newtown, where the number of pupils choosing Welsh-medium primary provision is increasing. Pupils are being "attracted" to more than one secondary school as there is no clear Welsh-medium pathway for them. This will not change following this proposal.</p> | <p>The Council agrees that the proposal to establish an all-age school in Llanfair Caereinion does not provide a clear Welsh-medium pathway for pupils receiving Welsh-medium primary provision in Newtown, as a designated Welsh-medium secondary school is not currently available in the area.</p> <p>However, the Consultation Document clearly states that the Council recognises the strength of Welsh-medium provision in the Caereinion area, and that the Welsh-medium provision at Caereinion High</p> |

| | | |
|----|---|---|
| | | School is central to the Council's aspiration to provide access to enhanced Welsh-medium secondary provision. The Council's intention is to take this forward using a phased approach with continued dialogue with representatives of the two schools and the community to explore ways to develop and enhance the Welsh-medium provision in Llanfair Caereinion. If the outcome of this is the need to change the school's language category, a further statutory process would be required to implement this. |
| 14 | If staffing is to stay the same, how exactly will the Welsh language be developed? | Should the Council proceed with the current proposal to establish an all-age school in Llanfair Caereinion, the temporary governing body will be key in establishing the ethos of the new school. The Council would work with the temporary governing body to ensure that the need to improve and enhance the Welsh-medium provision at the school will be a key consideration when establishing the new school. |
| 15 | The proposal will not improve post 16 provision. | The impact of the proposal on post-16 provision is considered on pages 38-40 of the consultation document. |
| 16 | The proposal is not clear for the parents of pre-school children. This year for the first time, more pupils have attended other Welsh schools rather than the Welsh language stream at Ysgol Llanfair Caereinion. | The Council agrees that the proposal to establish an all-age school in Llanfair Caereinion does not provide a clear Welsh-medium pathway for the parents of pre-school children, as a designated Welsh-medium secondary school is not currently available in the area. |

| | | |
|--|--|---|
| | | <p>Should the Council proceed with the current proposal to establish an all-age school in Llanfair Caereinion, the temporary governing body will be key in establishing the ethos of the new school. The Council would work with the temporary governing body to ensure that the need to improve and enhance the Welsh-medium provision at the school will be a key consideration when establishing the new school.</p> |
|--|--|---|

11.2 Criticism of the Council

| | | |
|---|---|---|
| 1 | <p>After years and years of Powys CC having no vision and afraid to move forward with educations the Welsh language is not increasing, and it is decreasing in social situations.</p> | <p>The Council has recognised this as an issue in its new Strategy for Transforming Education in Powys, and has recently published a new Vision for Welsh-medium Education in Powys, which will underpin the new WESP:</p> <p>In contrast to other areas of Wales, there has been no growth in Welsh-medium pupil numbers in Powys over recent years. Significant changes are needed to the Welsh-medium offer in Powys to reverse the trend of the last few years and ensure that all Powys learners can access comprehensive Welsh-medium provision throughout their educational careers.</p> |
| 2 | <p>What has happened to the authority's promise to establish a designated Welsh-medium secondary school by 2023 as promised by the portfolio holder for education in March 2018?</p> | <p>The WESP 2017-20 included the following objective:</p> <ul style="list-style-type: none"> - <i>'Continue with the work to establish one or more category 2A schools in North Powys'</i> |

along with the following Supporting Statement:

- *'Since 2015, the council has been investigating the feasibility of establishing a category 2A school or schools in north Powys. This early feasibility work has identified Newtown and/or Welshpool as the most suitable location(s) to develop new category 2A provision, building upon the growth and planned growth in primary Welsh- medium pupil numbers in these two towns. The authority will now develop a detailed options analysis, in order to submit a business case for 21st Century Schools Funding (Band B)'*

In response to Estyn's criticism of the Council's Education Services, with regard to progress of school reorganisation in Powys and inability to deliver on a few key proposals in recent years, a new Strategy for Transforming Education in Powys was developed, after extensive engagement. This Strategy included, within Strategic Aim 1, a commitment to reconfigure provision across the county with an aspiration to develop an infrastructure of all-age schools within the 13 secondary school localities. The development of Welsh-medium provision will now be taken forward within the current infrastructure.

However, if it is not possible to develop Welsh-medium provision in this way, then the Council will

| | | |
|---|---|---|
| | | reconsider its plans to develop Welsh-medium provision within the Severn Valley. This will have a financial impact and a review of the current Strategy will need to take place. |
| 3 | It is not possible to move along the language continuum without the Council, which has failed on numerous occasions to establish Welsh education continuity in Powys, having specific targets. Without there being strong vision in support of promoting the Welsh language, this will also be a failure. | In its inspection of the Council's Education Service in 2019, Estyn criticised the Council's record on stimulating the growth of Welsh-medium education. The Council has recognised this in its new Strategy for Transforming Education in Powys 2020-30 and Cabinet recently approved a new Vision for Welsh-medium Education in Powys which will underpin the new WESP, which will also be a ten-year plan. |
| 4 | It is clear to everyone that the policy of dual stream schools has failed to achieve the expectations hope for over the last 30 years. As there is no suggestion in the documents that the policy is going to change, the consultation is a farce and Powys education authority should be ashamed that it has wasted time and damaged the life chances of pupils by pretending to be doing something. | The proposal is to establish a new all-age school in Caereinion. The Consultation Document clearly states that the Council recognises the strength of Welsh-medium provision in the Caereinion area, and that the Welsh-medium provision at Caereinion High School is central to the Council's aspiration to provide access to enhanced Welsh-medium secondary provision. The Council's intention is to take this forward using a phased approach with continued dialogue with representatives of the two schools and the community to explore ways to develop and enhance the Welsh-medium provision in Llanfair Caereinion. If the outcome of this is the need to change the school's language category, a further statutory process would be required to implement this. |

| | | |
|---|---|---|
| 5 | The County Council should take a firm lead and make clear that a designated Welsh-medium school or schools will be established in Llanfair, or elsewhere, rather than expecting this to develop naturally over the years. | As above |
| 6 | At secondary level Powys continue to fail pupils who chose Welsh language education. A vision to rectify this issue is entirely inconsistent with the local authority's current approach | <p>The Council has recognised this in the WESP 2017-20:</p> <p><i>'The current method of delivering Welsh-medium education in Powys has led to a situation where access to this provision is a 'postcode lottery', where the type and level of provision available to pupils at each phase of their education varies significantly depending on where they live. This does not provide equality for Welsh-medium learners compared with English-medium learners. This lack of equality is exacerbated in the secondary phase, in particular in Key Stages 4 and 5'</i></p> <p>It is also recognised in the Strategy for Transforming Education in Powys 2020-30:</p> <p><i>'The size and proportion of the secondary streams varies considerably across the county, and the range of subjects available through the medium of Welsh also varies significantly. The curriculum offer is increasingly limited for Welsh-medium learners, and there is significant concern amongst the profession regarding the commitment of the authority to learners who study in Welsh.'</i></p> |

| | | |
|---|--|---|
| 7 | A number of promises for improvements to provision all through the County have been given, with no plan bearing fruit with the hopes of parents and pupils being dashed time after time. Is this how Powys want the experiences of parents and children to continue? | In its inspection of the Council's Education Service in 2019, Estyn criticised the Council's record on stimulating the growth of Welsh-medium education. The Council has recognised this in its new Strategy for Transforming Education in Powys 2020-30 and Cabinet recently approved a new Vision for Welsh-medium Education in Powys which will underpin the new WESP, which will also be a ten-year plan. |
| 8 | The lack of political decision making at County level, has meant that the review of small schools in the Caereinion catchment area has been ongoing since January 2011. | The new Strategy for Transforming Education in Powys acknowledges that a historical lack of political decision making has hindered progress over the years. |

12 COMMENTS ABOUT THE WELSH LANGUAGE

12.1 The proposal would have a positive impact on the Welsh language

| | | |
|---|--|--|
| 1 | As a first language Welsh speaker, I can only think that the effect of an all-through school on the Welsh language would only be a positive one, as there would be a higher uptake of Welsh in the classroom | The Council notes these comments which outline the positive impact the proposal could have on the Welsh language and opportunities to use Welsh at the new school. |
| 2 | The proposal would lead to a consistent approach to bilingual learning. | As above |
| 3 | All children from year one could have a greater input of welsh and this could be carried on through the higher end of the school, not just as a GCSE subject but part of a bi-lingual school. | As above |

| | | |
|---|--|----------|
| 4 | Teaching of both languages for all ages, from the moment they join the school. | As above |
| 5 | The two institutions could align curriculum to develop Welsh language skills from early primary to year 11. | As above |
| 6 | Welsh could be developed to be at the core of school life, building on established good practice at both schools. | As above |
| 7 | Establishing a new all-age school in Llanfair Caereinion would have a positive effect on persons opportunities to use the Welsh language | As above |
| 8 | It will give people a better chance of learning the Welsh language from a young age when it will be easier to pick up. | As above |

12.2 Don't think the proposal will have a significant impact on the Welsh language

| | | |
|---|--|--|
| 1 | Having read the information provided I don't think there will be a significant change in the use of Welsh Language other than perhaps from organic growth and increased confidence in using the Welsh Language. Both schools are already bi-lingual and have a strong commitment to the Welsh Language. It is for many the main reason why pupils attend the schools. The feeder primary schools have an excellent commitment to Siarter Iaith and Criw Cymraeg. | The Council notes these comments regarding the proposal's potential impact on the Welsh language and opportunities to use Welsh at the new school. |
| 2 | There should be no adverse effects on opportunities to use the Welsh language as Welsh is already a high priority in both schools. | As above |
| 3 | There will be no effect as nothing will change in relation to the education in the schools. | As above |

12.3 Concern that the proposal would have a negative impact on the Welsh language

| | | |
|---|---|--|
| 1 | This proposal would lead to opportunities to use the Welsh language decreasing | The Council notes these comments which outline concerns about the possible impact of the proposal on the Welsh language. |
| 2 | I do not think there will be any positive effects on the Welsh language as I think the high school would take preference. | As above |
| 3 | <p>If the all-age school was established as a bilingual school, there would be no positive effects on the opportunities to use the Welsh language – there should be no more opportunities than currently exist.</p> <p>Any situation which has two languages side by side, the English language will naturally dominate, thereby having an unfavourable effect on the Welsh language.</p> | As above |

12.4 Reference to ‘A million Welsh speakers’

| | | |
|---|--|--|
| 1 | If the Council is indeed supportive and wants to contribute towards Welsh Government’s vision of one million Welsh speakers, then it needs to put words into action. | Comment noted. The Council is committed to contributing to the Welsh Government’s vision to achieve one million Welsh speakers. The Council’s new Strategy for Transforming Education in Powys includes a clear commitment to develop Welsh-medium provision in Powys, and the Council has also recently launched a ‘Vision for increasing the number of fully bilingual learners in Powys’, which |
|---|--|--|

| | | |
|--|--|---|
| | | further develops its vision for Welsh-medium provision. |
|--|--|---|

12.5 Need to provide Welsh language support for parents

| | | |
|---|---|---|
| 1 | More needs to be done to support English language parents so that they can support their children with Welsh language education. | The Council agrees that providing opportunities for parents who don't speak Welsh to develop their own Welsh language skills will be important in order to support the development of a fully bilingual ethos at the new school and will work with Welsh for Adults providers and the temporary governing body to ensure that such opportunities are available. |
| 2 | Need a programme to support parents who don't speak Welsh. | As above |
| 3 | Offer lessons to parents from the Foundation Phase onwards. | As above |
| 4 | What support would the Council give to the parents and community for people moving to the area, if the language category was changed? | The current proposal is to establish a new dual stream all-age school. Should the Council take forward a further proposal to change the school's language category in the future, consideration would be given to the type of support to be provided to parents and the community at that time. |

12.6 Need to do more to promote Welsh

| | | |
|---|--|---|
| 1 | Need to change mindsets about the second language and first language labels – everybody is somewhere on the language journey | The Council notes these comments and agrees that there is a need to promote Welsh-medium education in order to raise awareness and to share information |
|---|--|---|

| | | |
|---|--|--|
| | | <p>about the benefits of bilingualism, and is currently working with stakeholder to develop a promotional campaign in order to raise awareness across Powys.</p> <p>The need for locally targeted materials is also acknowledged. The Council would welcome the opportunity to work with the current schools in Llanfair Caereinion and the temporary governing body of the new school if the proposal is implemented in order to develop and implement a campaign focussed on the Llanfair Caereinion catchment area.</p> |
| 2 | It is important that staff, pupils, parents, children and the community understand the advantages and the importance of the Welsh language in order to create a system which treats both languages equally. | As above |
| 3 | There should be a common and joined up approach to promoting the Welsh language from 4-18 and there should be an opportunity for pupils from the age of 4-18 to have a common approach to the Welsh language and promoting its use in everyday life and in lessons | As above |
| 4 | Need to promote the message from a young age about the two languages existing side by side. | As above |
| 5 | There needs to be careful work done to overcome the prejudice which some sectors of the community have about the Welsh language. Build on the positive work which has already taken place. Use the experiences and the aspirations of pupils and former pupils. Use former pupils as an example of the success of Welsh-medium | As above |

| | | |
|--|---|--|
| | education and bilingualism. Link this with promotional work and create a promotional programme that is personal for the area and not something generic. | |
|--|---|--|

12.7 Need to offer Welsh-medium pre-school provision

| | | |
|---|--|---|
| 1 | A 0-3 child provision would immerse learners in the language from the earliest possible age. | The Council agrees with this statement. |
| 2 | We will have to nurture the language from 0-4 as well as through the school. | The Council agrees with this statement. |

12.8 Need to offer immersion provision

| | | |
|---|---|--|
| 1 | Immersion units in the primary school similar to neighbouring county councils. Also, why not for the secondary school? Why not offer language immersion to staff who want it as well? | The Council fully acknowledges the need to improve the opportunities for latecomers to access Welsh-medium provision in Powys through offering enhanced immersion provision. The Council's 'Strategy for Transforming Education in Powys' includes an objective to 'Develop immersion opportunities'. Since the Strategy was approved, the Council has been working to develop this provision, and virtual provision will start to be offered from January 2021. |
| 2 | Need to recognise this and offer an opportunity for rapid language development, including support and an immersion programme. | As above |

12.9 Reference to the Siarter Iaith / opportunities to use Welsh

| | | |
|---|--|--|
| 1 | The Language Charter is useful and awareness of and respect to the Welsh language and its culture is central to the school plan. | The Council notes these comments regarding the Welsh language charter and the need to provide opportunities to use Welsh in social situations. |
| 2 | Implementation of the Welsh language charter – the idea of starting every conversation in Welsh to develop live bilingualism as is the norm in Europe. | As above |
| 3 | Need to develop opportunities outside school to socialise in Welsh | As above |
| 4 | Increasing opportunities with purposeful planning so that pupils are able to use Welsh formally in the school and socially. | As above |
| 5 | Encourage the use of Welsh in the community, even for those choosing to learn through the medium of English. | As above |
| 6 | Provide Welsh language social opportunities for staff, parents and pupils. | As above |

13. REFERENCE TO WELSH-MEDIUM EDUCATION DELIVERY MODELS

13.1 Dual Stream

13.1.1 Support for the Dual Stream Model

| | | |
|---|---|---|
| 1 | The all-age school needs to be bilingual to reflect the community | The Council notes these comments which support the current proposal to establish a new dual stream all-age school in Llanfair Caereinion. |
|---|---|---|

However, the Council recognises the limitations of the dual-stream model in developing fully bilingual pupils, as outlined in the WESP 2017-20 as follows:

'The authority agrees with the view of Welsh Government that pupils are more likely to become fully bilingual after attending Welsh-medium schools, particularly when they come from non-Welsh speaking homes, and acknowledges that designated Welsh-medium schools are the preferred model of delivery for Welsh-medium education. The authority acknowledges that a fundamental change is required to the method of delivering Welsh-medium education in Powys, to ensure that all learners can access high quality, robust provision from the early years onwards. In order to move towards a new delivery method, the authority is fully committed to establishing new designated Welsh-medium schools in both the primary and secondary sectors, and will direct capital investment to support this commitment, where appropriate. In addition, the authority will work in partnership with Mudiad Meithrin in order to provide access to high quality Welsh-medium early years provision.'

This statement has recently been reiterated in the recently approved 'Vision for increasing the number of fully bilingual learners in Powys' that will underpin the development of a new WESP and recognises the limitations of the dual-stream model in developing fully bilingual learners.

| | | |
|---|---|----------|
| 2 | By providing a dual stream all-age school, in my opinion, the area retains the use of the Welsh language, whilst giving those children, whose parents wish them to learn through the medium of English, a greater exposure to the Welsh language than they would have in an all English medium school. | As above |
| 3 | Fantastic opportunity for the dual stream education that is offered in both the primary and secondary school to have a more continuity by becoming a new all-aged school. Both Caereinion primary and secondary schools are great examples of producing students that learn through the medium of English but have a strong understanding of Welsh and are immersed within the Welsh language by being encouraged (through choice) to take part in Welsh activities such as the Urdd and Eisteddfod. | As above |
| 4 | Retaining the dual stream model will keep the community together. | As above |
| 5 | It is vital dual stream is retained. | As above |
| 6 | By continuing the dual stream education provision allows the Welsh language to strengthen and encourages the development of Welsh language skills for all pupils. Welsh first and second language students learn alongside each other to ensure the Welsh language culture, that is deeply embedded in Llanfair Caereinion community, continues to grow for many years to come. Segregating the Welsh first and second language pupils would remove access to the Welsh language for Welsh learners and would not support the Welsh Government strategy to achieve more Welsh speakers by 2050. | As above |
| 7 | Within our school there are still a large number of students learning in English and it is crucial to bring them with us on this journey. We don't want it to divide the community of Llanfair Caereinion. | As above |

| | | |
|----|---|----------|
| | | |
| 8 | Llanfair Caereinion has always been (and I hope always will) a proud bilingual community where Welsh speakers and Welsh learners live side by side and support the Welsh ethos valued in the community. We don't want to endanger this and revert to the segregation displayed in Northern Ireland with their religious split. This segregation would not only impact on the education, but let's consider the community impacts where there would be substantially decreased support for community clubs like sports clubs, young farmers etc. | As above |
| 9 | The Welsh-medium provision is similar with 53% in primary and 54% in high school. As we all know the language stream intake numbers fluctuate every year, but this data clearly supports a dual stream education provision is required in Llanfair Caereinion and must continue. | As above |
| 10 | The dual stream provision also allows pupils to change from Welsh to English medium education or vice versa if their abilities require or allow. | As above |

13.1.2 Criticism of the Dual Stream Model

| | | |
|---|--|---|
| 1 | In dual stream schools, both pupils and staff predominantly use English. | <p>The Council recognises the limitations of the dual-stream model in developing fully bilingual pupils, as outlined in the WESP 2017-20 as follows:</p> <p><i>'The authority agrees with the view of Welsh Government that pupils are more likely to become fully bilingual after attending Welsh-medium schools, particularly when they come from non-Welsh</i></p> |
|---|--|---|

| | | |
|---|---|---|
| | | <p><i>speaking homes, and acknowledges that designated Welsh-medium schools are the preferred model of delivery for Welsh-medium education. The authority acknowledges that a fundamental change is required to the method of delivering Welsh-medium education in Powys, to ensure that all learners can access high quality, robust provision from the early years onwards. In order to move towards a new delivery method, the authority is fully committed to establishing new designated Welsh-medium schools in both the primary and secondary sectors, and will direct capital investment to support this commitment, where appropriate. In addition, the authority will work in partnership with Mudiad Meithrin in order to provide access to high quality Welsh-medium early years provision.'</i></p> <p>This statement has recently been reiterated in the recently approved 'Vision for increasing the number of fully bilingual learners in Powys' that will underpin the development of a new WESP and recognises the limitations of the dual-stream model in developing fully bilingual learners.</p> |
| 2 | In a dual stream school the Welsh is treated less favourably than the English most of the time, e.g. every school concert, staff and governor meetings is in English. This is unacceptable. | As above |
| 3 | There is plenty of evidence that the education in the secondary Welsh-medium streams is inferior, because of the restricted choice of subjects. | As above |

| | | |
|----|--|----------|
| 4 | Dual stream schools do not offer the same opportunities for both languages. | As above |
| 5 | Dual stream schools do not offer the same access when choosing subjects. | As above |
| 6 | In dual stream schools, English is the school yard language and for extracurricular activities despite attempts to hold some activities in Welsh. | As above |
| 7 | There is a risk that in dual stream education the Welsh will be seen as the language of the class only, with all the ethos and culture which stand side by side with the Welsh language being lost. | As above |
| 8 | Many believe that attending a dual stream school is synonymous to being bilingual. This is not true – an English stream is usually equal to a category 5/4 at best. | As above |
| 9 | There will be no additional positive benefit to the Welsh language. There is no evidence that pupils in the English streams at Caereinion (primary and secondary) are more capable in Welsh than any pupil in an English-medium school. The only pupils that can use Welsh and English with confidence in Llanfair Caereinion schools are those who are in the Welsh language streams. | As above |
| 10 | There is no evidence that children in English streams have better Welsh skills than children in English schools. The language of the school yard is more likely to be English and extracurricular activities are more likely to be in English as the children in the English streams will not understand Welsh sufficiently. | As above |

| | | |
|----|--|----------|
| 11 | Dual stream schools only provide for a watered down version of Welsh speaking/learning education. An all through mixed language school will not provide enough of a benefit to those wanting to become fluent Welsh speaking. | As above |
| 12 | The historic compromise (dual stream schools) has done nothing to contribute towards creating more Welsh speakers; there is no evidence that the Welsh skills of pupils educated in English streams is better than those of pupils in English-medium schools and there is indeed abundant evidence that the education in Welsh streams is defective in relation to the choice of subjects available. | As above |
| 13 | The dual stream model strengthens the position of the English language and therefore treats the Welsh less favourably. | As above |
| 14 | In a dual stream system, the Welsh language will have inferior treatment. English will always be dominant. Social pressure, especially amongst children, means that there is no confidence to be proud and use the Welsh language naturally. The tendency remains in dual stream schools to use English so that everyone is included. | As above |
| 15 | There would be fierce opposition in the Llanfair Caereinion community to a proposal for the school to become Welsh-medium. It is unfair to place the burden and pressure of realising such a plan on local staff, governors and parents, many of whom would be against it anyway. | As above |
| 16 | Dual stream schools are inefficient – the predicted number of pupils for this all through school are not sufficient to ensure a budget to employ sufficient staff to teach two separate streams. | As above |

| | | |
|----|--|----------|
| 17 | Some Welsh speakers in north Montgomeryshire will support the bilingual dual stream provision, seeing this as a historic compromise which pleases everybody. They do not properly see the benefits of Welsh education nor do they see that non-Welsh speakers were the backbone of Welsh schools all over Wales and that Welsh education is available to all. This has been the model used in numerous other communities throughout Wales. | As above |
|----|--|----------|

13.2 Welsh-medium schools

13.2.1 Support for the Welsh-medium Model

| | | |
|---|---|--|
| 1 | Only a designated Welsh-medium school can achieve treating the Welsh language no less favourably than the English language. | <p>The Council recognises the limitations of the dual-stream model in developing fully bilingual pupils, as outlined in the WESP 2017-20 as follows:</p> <p><i>'The authority agrees with the view of Welsh Government that pupils are more likely to become fully bilingual after attending Welsh-medium schools, particularly when they come from non-Welsh speaking homes, and acknowledges that designated Welsh-medium schools are the preferred model of delivery for Welsh-medium education. The authority acknowledges that a fundamental change is required to the method of delivering Welsh-medium education in Powys, to ensure that all learners can access high quality, robust provision from the early years onwards. In order to move towards a new delivery method, the authority is fully committed to establishing new designated Welsh-medium schools in both the primary and secondary sectors, and will</i></p> |
|---|---|--|

| | | |
|---|--|--|
| | | <p><i>direct capital investment to support this commitment, where appropriate. In addition, the authority will work in partnership with Mudiad Meithrin in order to provide access to high quality Welsh-medium early years provision.'</i></p> <p>This statement has recently been reiterated in the recently approved 'Vision for increasing the number of fully bilingual learners in Powys' that will underpin the development of a new WESP and recognises the limitations of the dual-stream model in developing fully bilingual learners.</p> |
| 2 | A Welsh-medium school is the only way to ensure that Welsh-medium pupils can access a curriculum which is equal to English medium provision. | As above |
| 3 | In a Welsh school, the children will of course learn English as a language, literature and culture, but there is need to ensure that every other subject is available through the medium of Welsh, including mathematics and the sciences. | As above |
| 4 | Both languages should be treated equally – designated Welsh and English schools is the only way to achieve this. | As above |

13.2.2 Criticism of the Welsh-medium Model

| | | |
|---|---|--|
| 1 | Segregating the Welsh first and second language pupils would remove access to the Welsh language for Welsh learners and would not support the Welsh Government strategy to achieve more Welsh speakers by 2050. | The Council disagrees with this statement. |
|---|---|--|

14 REFERENCE TO EQUALITY OF OPPORTUNITY / WELSH LANGUAGE BEING TREATED LESS FAVOURABLY THAN ENGLISH

14.1 Reference to inequality in terms of subject choice

| | | |
|---|--|---|
| 1 | Courses would have to be run mainly in English, with only very few GCSE and A level courses being taught in Welsh, which means Welsh is treated less favourably. | <p>The Council notes this statement and has recognised this in the WESP 2017-20: <i>'The current method of delivering Welsh-medium education in Powys has led to a situation where access to this provision is a 'postcode lottery', where the type and level of provision available to pupils at each phase of their education varies significantly depending on where they live. This does not provide equality for Welsh-medium learners compared with English-medium learners. This lack of equality is exacerbated in the secondary phase, in particular in Key Stages 4 and 5'</i></p> <p>It is also recognised in the Strategy for Transforming Education in Powys 2020-30: <i>'The size and proportion of the secondary streams varies considerably across the county, and the range of subjects available through the medium of Welsh also varies significantly. The curriculum offer is increasingly limited for Welsh-medium learners, and there is significant concern amongst the profession regarding the commitment of the authority to learners who study in Welsh.'</i></p> <p>However, the Consultation Document clearly states the Council's intention to continue dialogue with</p> |
|---|--|---|

| | | |
|---|--|--|
| | | representatives of the two schools and the community to explore ways to develop and enhance the Welsh-medium provision in Llanfair Caereinion. If the outcome of this is the need to change the school's language category, a further statutory process would be required to implement this. |
| 2 | You can study 100% of subjects through the medium of English in Powys schools at KS3, GCSE and A levels, but far less in Welsh, and therefore Welsh is treated less favourably. | As above |
| 3 | No positive effects. To the contrary, the effect would be negative as North Powys pupils living in the Caereinion catchment (which is vast) would continue to have only about 70% of their lessons in Welsh medium at KS3 and far less option subjects taught in Welsh medium classes at GCSE and A Level. | As above |
| 4 | A decrease in Welsh-medium options to pupils, therefore failing to meet Strategic Aims 2 and 3 of Powys County Council. Category 2C education will continue to be provided in Caereinion for the majority of Welsh-medium Key Stage 3 and Key Stage 4 pupils instead of developing it. | As above |
| 5 | Currently, even though there are more pupils in the Welsh stream than the English stream of the existing secondary school, far more subject choice is available through the medium of English in comparison to Welsh – is there any confirmation that this will change? | As above. |

14.2 Concern that the proposal will have a negative impact on the Welsh language / Welsh-medium provision

| | | |
|---|---|---|
| 1 | The proposal strengthens the status quo and therefore the status of the English language. It will reinforce the status quo of the English language because the language of the school yard will be even more likely to be English, similarly extracurricular activities, e.g. sport and other activities which have an influence on language use. | The proposal is to establish a new all-age school in Caereinion. The Consultation Document clearly states that the Council recognises the strength of Welsh-medium provision in the Caereinion area, and that the Welsh-medium provision at Caereinion High School is central to the Council's aspiration to provide access to enhanced Welsh-medium secondary provision. The Council's intention is to take this forward using a phased approach with continued dialogue with representatives of the two schools and the community to explore ways to develop and enhance the Welsh-medium provision in Llanfair Caereinion. If the outcome of this is the need to change the school's language category, a further statutory process would be required to implement this. |
| 2 | Unless there are clear guidelines from the County, with specific expectations, targets and standards to support using Welsh, the language could deteriorate further. Leaving the Welsh language provision to chance and postcode lottery is not acceptable. There must be in place a strategy where Welsh education is central. | A new Vision for Welsh-medium Education in Powys has recently been approved by the Cabinet - this will underpin the Council's new WESP which will be a ten-year strategy. |

14.3 Other

| | | |
|---|--|---------------------------------|
| 1 | With Welsh still being a minority language, which is suppressed by the dominance of English language in society / culture (both locally and nationally), we should not be simply seeking to treat the languages equally. Instead, the Welsh language needs to be encouraged / supported much more proactively and, in some ways, | The Council notes this comment. |
|---|--|---------------------------------|

| | | |
|---|---|--|
| | treated more favourably than English. We won't have a truly bilingual school if we do not do this. | |
| 2 | The Welsh and English languages should be treated equally. | The Council notes this comment. |
| 3 | Welsh is being treated less favourably as there is no clear pathway for pupils throughout their education in the area. Is there an opportunity to establish a Welsh-medium secondary school in the county? Cylchoedd meithrin feed a large number of primary schools in the area, with no direct lifelong pathway in Welsh-medium education (this is different to every other Local Authority in Wales) | The Consultation Document clearly states that the Council recognises the strength of Welsh-medium provision in the Caereinion area, and that the Welsh-medium provision at Caereinion High School is central to the Council's aspiration to provide access to enhanced Welsh-medium secondary provision. The Council's intention is to take this forward using a phased approach with continued dialogue with representatives of the two schools and the community to explore ways to develop and enhance the Welsh-medium provision in Llanfair Caereinion. If the outcome of this is the need to change the school's language category, a further statutory process would be required to implement this. |
| 4 | By its very nature, the proposal treats the Welsh less favourably, because it's based on the misapprehension that both Welsh and English are equal. The worldwide dominance of the English language cannot be compared with the Welsh language, which is a minority language, perpetually under threat. | The Council notes this comment. |

15 CONCERN ABOUT THE IMPACT ON ENGLISH-MEDIUM PUPILS / PROVISION

| | | |
|---|--|---------------------------------|
| 1 | It's already the English language/streams who are treated worse. | The Council notes this comment. |
| 2 | The English language will be treated worse than Welsh. | The Council notes this comment. |

| | | |
|---|--|---------------------------------|
| | | |
| 3 | English speakers in the school already have their needs put second to the Welsh speakers. | The Council notes this comment. |
| 4 | I would say from experience that the Welsh language is favoured over the English language within the dual stream ethos of the schools. | The Council notes this comment. |
| 5 | The Welsh and English languages should be treated equally. | The Council notes this comment. |

16 COMMENTS RELATING TO THE CONSULTATION DOCUMENTATION

| | | |
|---|---|--|
| 1 | I have concerns that this consultation document is biased, it appears to be singularly for the promotion of the development of a single language school system. The questions in the consultation does not give the option to discuss anything other than language. | <p>The consultation document is not biased. The consultation is on a proposal to establish a dual stream all-age school in Llanfair Caereinion, and the consultation document considers the likely impact of this proposal.</p> <p>The questions in the response form include:</p> <ol style="list-style-type: none"> 1. Do you agree with the current proposal to establish a new all-age school in Llanfair Caereinion? 2. Do you think that the Council should be considering any other options for Llanfair Caereinion instead of the proposal to establish a new all-age school? <p>Plus:</p> |
|---|---|--|

| | | |
|---|--|---|
| | | <p>Impact on the Welsh language (a requirement of the Welsh Language Standards)</p> <p>Impact on people with protected characteristics (a requirement of Equalities legislation)</p> |
| 2 | <p>The proposal also does not address the ‘challenges’ facing the council as outlined in the consultation document, such as the proportion of small schools, decreasing pupil numbers, high school surplus places, building condition, financial pressures, inequality in access to Welsh medium education and limited post 14 and 16 choices.</p> | <p>The ‘challenges facing the council’ have been included in the consultation document in order to provide strategic context to the current proposal to establish an all-age school in Llanfair Caereinion, and to outline the reasons why change is needed in respect of education provision in Powys.</p> <p>The consultation document does not claim that the proposal to establish an all-age school in Llanfair Caereinion would address all of these challenges. The reasons for the proposal and the anticipated benefits of the proposal are clearly outlined in the consultation document.</p> |
| 3 | <p>The documentation that I have read, which attempts to explain the rationale behind the proposal in the context of Strategic Aims, does not contain enough justification to support how the wholly important strategic aims will be improved by merging the schools.</p> | <p>In the consultation document, the Council explains that the one of the objectives in the Council’s Strategy for Transforming Education in Powys is to ‘Develop a network of all-age schools based around the 13 current secondary school location.’ This is one of the objectives outlined within Strategic Aim 1, ‘We will improve learner entitlement and experience’ of the Council’s Strategy for Transforming Education in Powys.</p> |
| 4 | <p>I see no explanation or reasoning in the documentation to support the creation of a lifelong school in Llanfair, primarily because the</p> | <p>The reasons for the current proposal to establish an all-age school in Llanfair Caereinion are listed on</p> |

| | | |
|---|--|---|
| | proposal will not have any effect in overcoming the problems facing Powys which need to be addressed. Powys has already created lifelong schools in Llanfyllin and Llanidloes and it was obvious to parents that the only reason for this was so that Powys could be seen to be doing something without changing anything. | page 24 of the Consultation Document, and the potential advantages of the proposal are listed on page 25. |
| 5 | I am very concerned that the case for the change to an all-age school has not been proven at all. | <p>As indicated on page 23 of the consultation document, all-age schools are becoming increasingly popular in Wales, particularly in rural areas where they are seen as a way of ensuring the continued provision of education.</p> <p>The reasons for the current proposal to establish an all-age school in Llanfair Caereinion are listed on page 24 of the Consultation Document, and the potential advantages of the proposal are listed on page 25.</p> |
| 6 | Indicating there will be more changes in the future and this proposal is the first step, is very short sighted and inefficient. | <p>The current proposal relates to merging Llanfair Caereinion C.P. School and Caereinion High School to establish a new dual stream all-age school operating from the current buildings of the two schools.</p> <p>Being part of one school reorganisation proposal does not mean that the school cannot be part of another proposal in the future, and it is possible that there will be further proposals in the future which would affect the schools in Llanfair Caereinion. Should this be the case, a further consultation process would be carried out, providing the opportunity for all stakeholders to give their views.</p> |

| | | |
|---|--|--|
| 7 | The document states that the secondary school is Category 2B. Is this a statement of hope by the authority because I have never seen any evidence that Llanfair reaches the standard of a Category 2B school in Key Stages 3 and 4? | The information about Caereinion High School provided on My Local School (https://mylocalschool.gov.wales) states that the language category of Caereinion High School is 'Bilingual (Type B)' |
| 8 | <p>The Welsh impact assessment of the consultation notes in its conclusion at 5.4 "Whilst the proposal would not change the current language category of the two schools, it is anticipated that amalgamating the two schools would lead to enhanced opportunities to use and promote the Welsh language within the new school."</p> <p>No further information is given in the document and this therefore poses the question what exactly would these opportunities be?</p> | The Council is keen to provide opportunities to any staff wishing to develop their Welsh language skills and will work with the temporary governing body of the new school to identify opportunities to enable staff to develop their Welsh language skills. |

17 COMMENTS RELATING TO THE PROCESS

17.1 Concerns about the consultation process

| | | |
|---|---|--|
| 1 | I do not consider that this form constitutes a robust 'consultation process'. Stakeholders have not been given sufficient background information. | The consultation has been carried out in accordance with the requirements of the School Organisation Code (2018). A consultation document was prepared in accordance with the requirements of the Code, which provided a wide range of information for stakeholders. |
| 2 | I would like to question whether there is a true consultation process | The consultation has been carried out in accordance with the requirements of the School Organisation Code (2018), providing the opportunity for all stakeholders to give their views on the proposal. |

| | | |
|---|---|--|
| 3 | I believe that the decision has already been made and that this consultation is a sham | The consultation has been carried out in accordance with the requirements of the School Organisation Code (2018). No decision has yet been made on whether or not to proceed with the proposal. |
| 4 | We do find ourselves undertaking this consultation at this very strange time, how are you ensuring that the community as a whole isn't disadvantaged in being engaged in this consultation? | The consultation has been carried out in accordance with the requirements of the School Organisation Code (2018). Information about the consultation has been circulated to stakeholders as required by the School Organisation Code. |
| 5 | It needs to be clear to the community that this is a consultation on the establishment of the all-age school not the linguistic provision. | <p>The current proposal relates only to the establishment of an all-age dual stream school in Llanfair Caereinion.</p> <p>The Council is not currently proposing any changes to the language category of the two current schools. Any changes to the school's language category would be subject to another statutory process.</p> |
| 6 | There seems to be a plan to rush through an all through school and an attempt to by the authority to fully address bilingual secondary education. | As above |
| 7 | I am not necessarily against establishing a lifelong school in Llanfair, but rather the timing of the consultation process and the use of the scant resources and time of the officers of the education department of Powys County Council. | Comment noted. The reasons for the current proposal to establish an all-age school in Llanfair Caereinion are listed on page 24 of the Consultation Document, and the potential advantages of the proposal are listed on page 25. |

| | | |
|---|--|--|
| 8 | The schools have sent the information out to the parents but is there normally consultation meeting which they would attend? | There is no requirement for consultation meetings to be held as part of school reorganisation proposals. |
|---|--|--|

17.2 Reference to Driver v Rhondda Cynon Taf

| | | |
|---|---|---|
| 1 | The judgment of Mr Justice Fraser in <i>Driver v Rhondda Cynon Taf County Borough Council [2020] EWCH 2071 (Admin)</i> needs to be carefully considered when planning secondary education, and the effect of the proposal on the linguistic progression of education from primary to secondary – generally within the county and specifically in the context of this consultation for the pupils of Llanfair Caereinion and north east Powys. | The Consultation Document includes an assessment of the impact of the proposal on many factors, as required by the School Organisation Code. The draft Impact Assessment also considers the impact on the Welsh language. |
| 2 | The Pont Sion Norton judicial review judgment (<i>Driver v Rhondda Cynon Taf</i>) argues the importance of ensuring progression from primary to secondary. Powys County Council needs to be satisfied that the proposal as it stands is legally robust. I would assert that it is not, and that the lack of progression to the 600 of pupils who receive their primary education through the medium of Welsh is legally vague. What about the expectation in the new curriculum that there is “sufficient progression” available locally? | The proposal is to establish an all-age school in Llanfair Caereinion. The Consultation Document clearly states the Council’s intention to develop Welsh-medium provision at the school in a phased approach. If the outcome of this is the need to change the school’s language category, a further statutory process would be required to implement this. |
| 3 | Please note the findings of this year’s Pont Sion Norton judicial review (<i>Driver v Rhondda Cynon Taf</i>). What is being offered by Powys County Council means that the current proposal is not legal. | The Council disagrees with this comment. |

18. IMPACT ON PROTECTED CHARACTERISTIC GROUPS

18.1 Positive impact

| | | |
|---|---|--|
| 1 | I also feel the children will be exposed to a larger number of children with different backgrounds i.e. multi race, religion etc | The Council notes these comments regarding the proposal's potential impact on pupils belonging to the protected characteristic groups. |
| 2 | For children with additional learning needs, I think the main benefit would be ensuring that the support received during the primary phase, continues seamlessly into KS3, with intervention measures (including Basic Skills language and maths resources) being used to bridge the gap. | As above |
| 3 | I think it would have a very positive impact on our school and wider community. | As above |

18.2 Concern about possible negative impact

| | | |
|---|---|--|
| 1 | Age range is too vast which could have an impact on pupils belonging to the protected characteristic groups | <p>Should the proposal be implemented, a new dual stream all-through school would be established, and all pupils currently attending Llanfair Caereinion C.P. School and Caereinion High School would be able to attend the new school. The aim of the proposal is to improve the educational opportunities available to all pupils in Llanfair Caereinion, including any pupils belonging to the protected characteristic groups.</p> <p>Pupils will continue to be taught within their cohorts and there is no reason to believe that the proposed</p> |
|---|---|--|

| | | |
|---|--|---|
| | | new school would be unable to meet the needs of pupils belonging to the protected characteristic groups that would be affected, including pupils with Additional Learning Needs, pupils belonging to Ethnic Groups other than White British, EAL pupils, pupils eligible for Free School Meals and Looked After Children. The aim of the proposal is to improve the educational opportunities available to all pupils, including pupils belonging to protected characteristic groups. |
| 2 | I think it is important that children with additional learning needs in the lower age groups at the moment continue to have input from very experienced teaching assistants and this time is protected. | The Council notes this comment. The aim of the proposal is to improve educational opportunities for all. |
| 3 | High school currently does not meet the requirements of the Equality Act 2010 - there is no proposal to modernise or re shape either school, so how is this proposal going to meet the needs and raise standards to comply to this Act? | The Council will undertake an assessment of the school premises to understand what is required to make it compliant with the Equality Act 2010. |
| 4 | Every single child aged between 11 and 18, who fits any of the protected characteristics is currently not being treated as equal if they live in Newtown, where you haven't provided them with the opportunity to study through the medium of Welsh. | The Council acknowledges that a designated Welsh-medium school is not currently available to pupils in the Newtown area, however these pupils do have the opportunity to study through the medium of Welsh, currently in Caereinion High School and, should the proposal be supported, at the new all-age school in Llanfair Caereinion. |
| 5 | There is a lack of secondary ALN provision for pupils whose first language is Welsh. | The Council notes this comment. A new ALN/SEN Strategy is currently being implemented in Powys which recognises that there is insufficient support for Welsh-medium pupils with ALN/SEN. |

19 OTHER OPTIONS

19.1 Retain the status quo

| | | |
|---|---|--|
| 1 | I am not convinced that the strengths outlined for the proposed Option 3 warrant the necessity for merging the two schools. | <p>The Status Quo is considered as an option in the consultation document, however a number of weaknesses are identified in respect of this option. In addition, the option only met 1 of the Critical Success Factors against which all three options were assessed.</p> <p>The Consultation Document also outlines the reasons for the current proposal, and the anticipated benefits of the proposal.</p> <p>The aim of the proposal is to improve the educational opportunities for all pupils in Llanfair Caereinion.</p> |
| 2 | Don't think it's needed. Why fix something that isn't broken. The primary school is doing well. It's the high school that needs sorting. Why ruin one school by joining with another when the problem lies there. | As above |
| 3 | The primary school's most recent Estyn inspection was 'good' in all areas. Why can't it continue as it currently is like all the other primary schools in the cluster? Why aren't they being looked at? | As above |

19.2 Options involving the whole cluster

| | | |
|---|---|--|
| 1 | <p>The all-age school provision for the entire Caereinion catchment would be the most viable option put forward. This proposal would also support the Welsh ethos and it would meet all the critical success factors.</p> | <p>A cluster approach to all-age education may be a possibility in future. However, it was not possible to take this forward currently due to the current mix of school types in the catchment and the requirements of the School Organisation Code. The catchment currently has a combination of school types: Welsh-medium, dual-stream, English-medium. Church in Wales and Community Primary Schools. The School Organisation Code states: <i>'Proposals should ensure that the balance of school provision reflects the balance of demand. This means that where school provision is being reduced or removed, alternative school provision of the same nature (language category or, if relevant, religious character), wherever possible, should remain available and accessible to pupils in the local area.'</i></p> <p>The Code goes on to state that <i>'in some areas it may not be compatible with the cost-effective provision of education to continue to maintain access to schools of the same nature.'</i></p> <p>It must also be recognised that a new school has only recently been opened in Ysgol Cwm Banwy following the closure of Ysgol Llanerfyl and Ysgol Dyffryn Banw.</p> |
| 2 | <p>The council must consider option 4 – a dual stream all-age school for the whole Caereinion catchment area that would close and merge Caereinion High school and Llanfair primary school with Meifod, Pontrobert, Cwm Banwy and Castle Caereinion primary</p> | <p>As above.</p> |

| | | |
|---|--|---|
| | schools and reopen one all through school on the current school sites in Llanfair Caereinion. | |
| 3 | The closure of the smaller schools in the catchment and amalgamation into one all through school would increase numbers to 820 approx., pupils aged 4-18. This proposal would also increase the opportunity of attracting capital investment or annual cost savings could be reinvested into current school estates across the primary and secondary campuses. Caereinion high school is fortunate to have sufficient area within its grounds to allow for any potential expansion. Capital investment is required to update the current estate and its buildings to fulfil the requirements of the Equality Act 2010, and cost savings realised from this proposal can be reinvested to all these to be met. The potential proceeds of sales from redundant sites, could also result in capital receipts being made available to reinvest in new school buildings. I appreciate the figures shown above are purely estimates but a potential cost saving of £4 million pounds over 10 years must be considered. With the ongoing pandemic and its financial implications, the devolution settlement will be reduced and in turn the current financial pressures the council is facing will inevitably be increased. | As above. |
| 4 | Consideration needs to be given to feeder schools in the catchment area, their size their funding per pupil and finally how they will integrate with the proposed all-age school. | The Council acknowledges that there are several small schools with high cost per pupil within the Caereinion catchment. If the all-age school is established, then all schools within the cluster will be expected to collaborate closely, and opportunities provided to those pupils in the feeder schools to participate in activities at the all-age school. |

19.3 Closure of Post-16 provision

| | | |
|---|---|--|
| 1 | Further options that need to be considered could be the closure of the post 16 provision. The current post 16 offer and lack of pupils is an increasing drain on the school's financial budget. | Whilst the current proposal does not propose any changes to the post-16 provision in Llanfair Caereinion, improving learner entitlement and experience for post-16 learners is one of the Strategic Aims in the Council's Strategy for Transforming Education in Powys. A workstream has been established in order to address this Strategic Aim, which is looking at post-16 across Powys, with the aim of improving post-16 provision across the county. |
|---|---|--|

19.4 Closure as part of a comprehensive review

| | | |
|---|--|--|
| 1 | Why does the consultation not include the possibility of closing the Llanfair site as part of a comprehensive review? One county councillor explained that councillors had instructed officials that the secondary site was not to close. If this is true, one cannot take this consultation as proof that the authority is taking education seriously, but is rather more ready to continue to disregard pupils' needs. | The Council's Strategy for Transforming Education in Powys includes a strategic objective to 'Develop a network of all-age schools based around the 13 current secondary school locations.' The current proposal to establish an all-age school in Llanfair Caereinion meets this objective. |
|---|--|--|

19.5 Federation

| | | |
|---|---|--|
| 1 | There should have been an option to consider a federation between the two schools | Federation of Llanfair Caereinion C.P. School and Caereinion High School has been considered as an option within this process. |
|---|---|--|

| | | |
|---|---|---|
| 2 | Potential federation of the all-age school with Ysgol Rhiw Bechan | The current proposal is focussed on options for Llanfair Caereinion C.P. School and Caereinion High School, therefore options involving other schools in the catchment area have not been considered. Should the Council proceed with the process to establish an all-age school in Llanfair Caereinion, there is no reason why the new school could not federate with Ysgol Rhiw Bechan or any other school in the area. |
|---|---|---|

19.6 Alternative Welsh-medium options

19.6.1 Establish dedicated Welsh-medium secondary provision at Caereinion

| | | |
|---|--|---|
| 1 | Make the all-age school a Welsh language school. | The Council notes these comments regarding the language category of the proposed new school. The current proposal is to establish a dual stream all-age school in Llanfair Caereinion, should the Council wish to change the school's language category, a further statutory process would be required. |
| 2 | I feel that Llanfair Caereinion is missing an opportunity here to establish a Welsh-medium secondary school for the catchment. This would be an ideal opportunity to do this, in a central location which is within a reasonable distance for children from the Caereinion (and Dyffryn Banw) area, Llanfyllin, Newtown and Welshpool. | As above |
| 3 | Llanfair Caereinion would be an ideal site for a Welsh-medium secondary school. This is the most Welsh school in the area and the current Welsh stream is already bigger than the English stream. Geographically, it would make sense as pupils from Ysgol Dafydd | As above |

| | | |
|---|---|----------|
| | <p>Llwyd and Ysgol Gymraeg y Trallwng travel to Llanfair Caereinion already, as well as pupils from areas such as Welshpool, Meifod and Dyffryn Banw.</p> <p>If a Welsh-medium school was established in Newtown, pupils wouldn't travel from some areas such as Dyffryn Banw and Meifod to Newtown. Llanfair is a much more central and natural location for them.</p> | |
| 4 | As Powys has now decided not to develop a Welsh medium school in Newtown, the Caereinion site could be the solution for developing Welsh medium education in North Powys. | As above |
| 5 | If a Welsh school was established in Newtown, as previously mentioned, pupils would not travel the same distance from areas such as Dyffryn Banw and Meifod, all the way to Newtown. Llanfair is a far more central and natural location for this | As above |
| 6 | It is not possible unless the lifelong school is a Welsh one. There has been talk of changing Caereinion school to a "natural" Welsh school for decades. We do not believe that this will ever happen. | As above |
| 7 | We would wish to see a continuation of Welsh-medium education from the Cylch to the primary school and to the secondary school, as happens in other areas of Wales. | As above |
| 8 | This is an excellent opportunity to ensure that the primary school moved to be a Welsh-medium school and the high school ensures that as much as possible of the education is provided in Welsh in order to eventually become a Welsh-medium school. Welsh-medium experiences and education should be the main consideration, not finance. | As above |

| | | |
|---|---|----------|
| 9 | There is a need to ensure that the school is a Welsh school. Otherwise it will be an English school with some use of Welsh. | As above |
|---|---|----------|

19.6.2 Establish dedicated Welsh-medium secondary provision in a different location e.g. Newtown

| | | |
|---|--|---|
| 1 | <p>According to the report there is a reduction in pupil numbers in both schools. The pupil population increase is in other parts of the County, e.g. the Severn Valley. Therefore, the provision of Welsh-medium secondary education should happen first in the Severn Valley, and only then should consideration be given to the future of Llanfair schools.</p> | <p>The Council notes these comments about establishing a Welsh-medium school in another area.</p> <p>The WESP 2017-20 included the following objective:</p> <ul style="list-style-type: none"> - <i>‘Continue with the work to establish one or more category 2A schools in North Powys’</i> <p>along with the following Supporting Statement:</p> <ul style="list-style-type: none"> - <i>‘Since 2015, the council has been investigating the feasibility of establishing a category 2A school or schools in north Powys. This early feasibility work has identified Newtown and/or Welshpool as the most suitable location(s) to develop new category 2A provision, building upon the growth and planned growth in primary Welsh- medium pupil numbers in these two towns. The authority will now develop a detailed options analysis, to submit a business case for 21st Century Schools Funding (Band B)’</i> <p>In response to Estyn’s criticism of the Council’s Education Services, about progress of school reorganisation in Powys and inability to deliver on a</p> |
|---|--|---|

| | | |
|---|---|--|
| | | <p>few key proposals in recent years, a new Strategy for Transforming Education in Powys was developed, after extensive engagement. This Strategy included, within Strategic Aim 1, a commitment to reconfigure provision across the county with an aspiration to develop an infrastructure of all-age schools within the 13 secondary school localities. The development of Welsh-medium provision will now be taken forward within the current infrastructure.</p> <p>However, if it is not possible to develop Welsh-medium provision in this way, then the Council will reconsider its plans to develop Welsh-medium provision within the Severn Valley. This will have a financial impact and a review of the current Strategy will need to take place.</p> |
| 2 | Establish a Welsh medium all through school in Newtown | As above |
| 3 | The all-age school needs to be a Welsh-medium school immediately. As that will not happen, the only option is to establish a Welsh-medium secondary to serve the catchment in Newtown. | As above |
| 4 | It is obvious that the answer is to establish provision on a site near to the Welsh primary Ysgol Dafydd Llwyd in Newtown. This would mean a journey of 40 minutes for my own children to that school, but the provision would be centralised to answer the need in Welshpool, Newtown, Dyffryn Banw, Caersws and nearby areas. | As above |
| 5 | It's clear that the solution is to establish provision on a site near to Ysgol Dafydd Llwyd in Newtown, which would centralise provision to | As above |

| | | |
|---|--|----------|
| | meet the needs of Welshpool, Newtown, Tregynon, Dyffryn Banw, Caersws and other nearby areas. | |
| 6 | Establish a Welsh medium school in the catchment area in Powys where there is the greatest demand for it. | As above |
| 7 | You need to be look more strategically on the Welsh-medium education requirements in North East Powys – and undertake to establish a designated Welsh Secondary school first of all. | As above |

19.6.3 Other comments relating to establishing dedicated Welsh-medium provision

| | | |
|---|--|--|
| 1 | There is a need to establish a Welsh school, where English is an important part of the education provided. | <p>The Council notes these comments relating to the need for dedicated Welsh-medium secondary provision in this area.</p> <p>The current consultation is on a proposal to establish a dual stream all-age school in Llanfair Caereinion. The Consultation Document clearly states that the Council recognises the strength of Welsh-medium provision in the Caereinion area, and that the Welsh-medium provision at Caereinion High School is central to the Council's aspiration to provide access to enhanced Welsh-medium secondary provision. The Council's intention is to take this forward using a phased approach with continued dialogue with representatives of the two schools and the community to explore ways to develop and enhance the Welsh-medium provision in Llanfair Caereinion. If the outcome of this is the need to change the</p> |
|---|--|--|

| | | |
|---|--|--|
| | | school's language category, a further statutory process would be required to implement this. |
| 2 | There is clear demand for Welsh-medium secondary provision, as can be seen in the numbers choosing Welsh medium provision in the Primary sector and from Powys CC originally planning on opening a new Welsh school in Newtown. | As above |
| 3 | There is a need to provide situations and locations (such as a Welsh-medium school) where the Welsh language can thrive and be a common language for all. | As above |
| 4 | We ask that Powys County Council establishes a Welsh-medium secondary school in a central and accessible location to provide progression for Welsh-medium primary learners in the north east of the County. There is a need to invest in development to expand on the current designated Welsh-medium primary school year by year, so that the secondary provision can be established as soon as possible and grows year on year to ensure financial sustainability and careful curriculum planning, expanding the county's Welsh-medium workforce gradually and robustly. There are many examples across Wales of starting high schools with a single year, the most recent is Ysgol Caer Elen in Pembrokeshire. Powys could also lead on an innovative development which would be a new model to develop Welsh-medium education in Wales. This would be a golden opportunity for Powys to transform the provision for learners in the area for ever, so that they finally have the opportunities they deserve and which will "improve access to Welsh-medium provision across all key stages". | As above |
| 5 | There is a need for a Welsh-medium school, which sets high expectations for each child, where English is part of the system, but | As above |

| | | |
|---|---|----------|
| | not the start and end point of all communication. There is a need for a school which places an emphasis on Welsh, instead of seeing the language as an occasional factor. There is a need to ensure that pupils have a wide range of Welsh-medium subjects, in contrast to the gradual disappearance of studying sciences and maths in Welsh. The huge effort that would be needed to promote the language could be a way to promote expectations of a higher standard of education more generally. | |
| 6 | A designated Welsh-medium secondary school is needed in north east Powys to serve the area, which will offer continuity for designated Welsh-medium primary schools in the area. In the same way, English-medium provision which will provide choice for all parents and equal opportunities for pupils. | As above |
| 7 | There is a need for a Welsh-medium all-age school, to be equal to the English-medium ones that will also be established during the period of Transforming Education in Powys. Then, there will be a choice of English-medium, dual stream (already exists in Llanfyllin) or Welsh-medium all-age schools in North Powys. | As above |
| 8 | A category 2a or 1 school is needed in North Powys so that Welsh-medium pupils can receive the same opportunities as other pupils across Wales. This needs to be done urgently, this can't wait until 2030. | As above |
| 9 | It is noted on page 9 of the consultation document that we will have to wait for a further consultation to designate the language medium of the school: "If the outcome of this is a need to change the school's language, a further statutory process would be needed to implement this." We wish to make it clear that both parents and | As above |

| | | |
|--|--|--|
| | pupils of the area have waited far too long already. A solution is needed soon, followed by decisive implementation. | |
|--|--|--|

7. FURTHER ASSESSMENT AND CONCLUSION

7.1 Further assessment of the proposal and alternatives

Following consultation, the proposal and each of the alternatives have been further assessed to consider any further information that has come through the consultation or otherwise on the:

- i) Likely impact on quality and standards in education
- ii) Likely impact on the community and
- iii) Likely effect of different travelling arrangements.

There are no changes to the earlier assessment outlined in the 'proposal paper' i.e. Appendix A Options Appraisal Caereinion, Cabinet Report 29th September 2020.

7.2 Further reasonable alternatives

Other alternatives have been suggested and can be found in section 19 of this report, including the Council's response to these alternative options. They include:

- 19.1 Retain the Status Quo
- 19.2 Whole cluster approach
- 19.3 Closure of post-16
- 19.4 Closure as part of a comprehensive review
- 19.5 Federation

Whilst the proposal that was subject to consultation is to establish a bilingual all-age school in Llanfair Caereinion, many respondents commented on Welsh-medium provision, the Council's approach to the development of Welsh-medium provision in the proposed all-age school and a number of alternative Welsh-medium options were also suggested:

- 19.6.1 Establish dedicated Welsh-medium secondary provision at Caereinion
- 19.6.2 Establish dedicated Welsh-medium secondary provision in a different location e.g., Newtown
- 19.6.3 Other comments relating to establishing dedicated Welsh-medium provision

7.3 Conclusion

It is confirmed that implementation of the proposal is the most appropriate response to the reasons identified for the proposal, as outlined below:

- a) To improve educational outcomes

- a. More opportunities for staff to move between key stages, to further develop expertise in specific areas
 - b. Opportunities for pupils in all key stages to benefit from staff expertise in specific subject areas
 - c. Improved curricular and extra-curricular opportunities for pupils in all key stages
- b) To improve educational provision
- a. Opportunities to develop a broader curriculum to meet the needs of pupils in all key stages
 - b. Opportunity to improve the range and quality of facilities and learning resources available to the benefit of pupils in all key stages
 - c. Improved opportunities for continuity of support for vulnerable groups of pupils
 - d. Improved opportunities for more able and talented pupils
- c) To improve leadership and management
- a. Opportunity for high quality, robust leadership across all key stages
 - b. Improved opportunities for the headteacher to distribute key leadership tasks to a greater number staff across all phases of education
 - c. Improved opportunities for the governing body to have strategic oversight of education for pupils from 4 – 18
- d) To improve efficiency in the delivery of education
- a. Potential for the school to operate more efficiently through more efficient deployment of staff
 - b. Potential for sharing of resources across all key stages
- e) To provide more seamless transition between key stages

It is also acknowledged that a significant number of comments were received to the consultation in respect of the language category of the proposed new all-age school. These included comments which expressed a view that the current proposal was not ambitious enough in respect of the language category of the proposed new school, as well as comments which supported the proposal to retain the current dual stream provision in Llanfair Caereinion.

Whilst a number of respondents took the opportunity to comment on the Council's approach to developing Welsh-medium provision at Caereinion, it must be noted that there is a strong response in favour of establishing designated Welsh-medium provision to serve the Llanfair Caereinion/Severn Valley area – there are primary schools in both areas that are currently feeder schools of Caereinion High School.

The Council will continue with its approach as outlined in the Consultation Document:

'The Consultation Document clearly states that the Council recognises the strength of Welsh-medium provision in the Caereinion area, and that the Welsh-medium provision at Caereinion High School is central to the Council's aspiration to provide access to enhanced Welsh-medium secondary provision. The Council's intention is to take this forward using a phased approach with continued dialogue with representatives of the two schools and the community to explore ways to develop and enhance the Welsh-medium provision in Llanfair Caereinion. If the outcome of this is the need to change the school's language category, a further statutory process would be required to implement this.'

However, the Council will accelerate the dialogue with representatives of the two schools and the community to explore ways to develop and enhance the Welsh-medium provision in Llanfair Caereinion, and will also include all feeder schools in this dialogue.